

Epulis osteoplastica in a child

Ryo Sasaki¹, Noboru Takanashi², and Toshihiro Okamoto¹

¹Tokyo Women's Medical University School of Medicine

²Affiliation not available

August 28, 2020

Abstract

A 13-year-old female patient presented with a 20×15-mm pedunculated, elastic hard cauliflower-shaped lesion with a healthy color and partial erosion attached to the maxillary gingiva in the right maxillary first molar region. The lesion gradually grew over a year. Excisional biopsy was performed and histopathological analysis indicated epulis osteoplastica.

Hosted file

Sasaki_epulis_clinicalcasereport.doc available at <https://authorea.com/users/354668/articles/478139-epulis-osteoplastica-in-a-child>



Figure 1

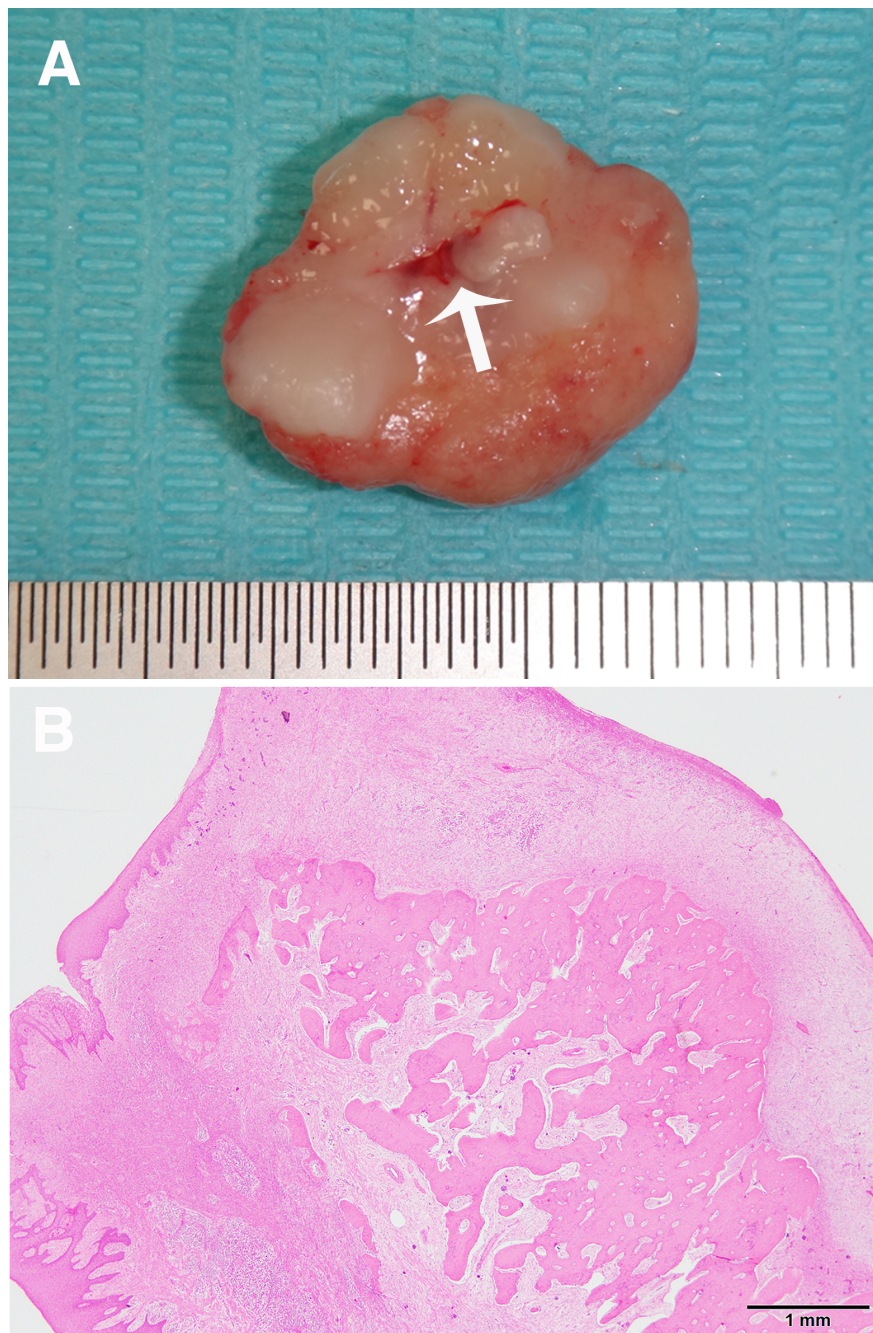


Figure 2