

Figure 1. Study area showing location of sampling sites in western rivers in the Urmia Lake basin



Figure 2. Magnification of (*Selenastrum capricornutum*) under microscope. Symbols +P (left)

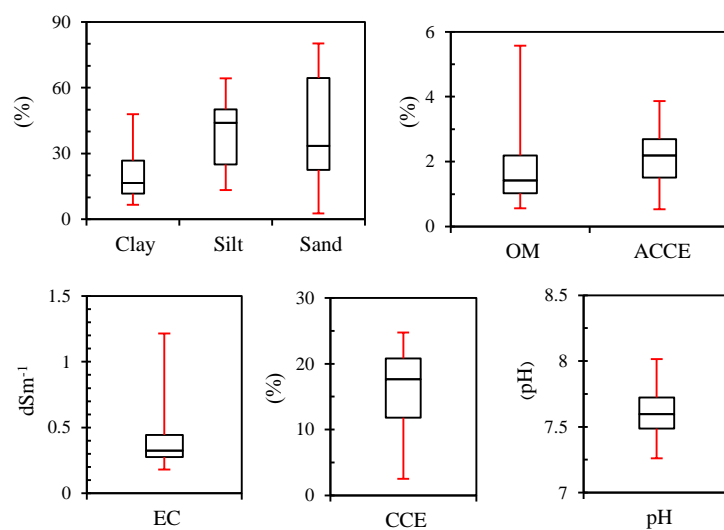


Figure 3- Box plots of the physicochemical properties of river sediments

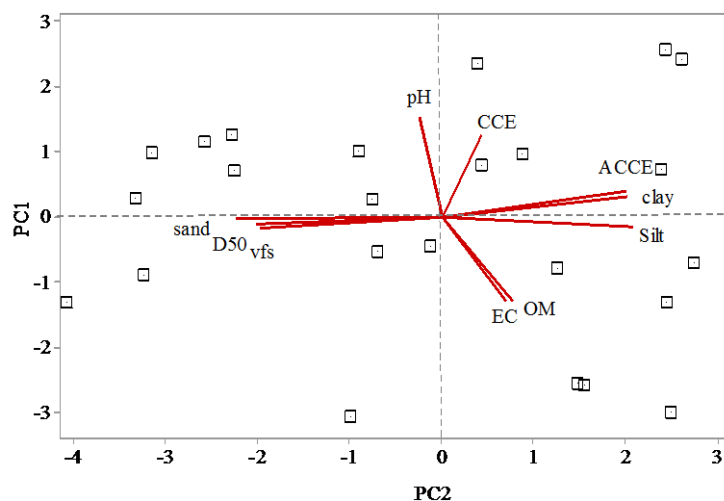


Figure 4. Loading values of variable and variation of observation component in the studied sediments

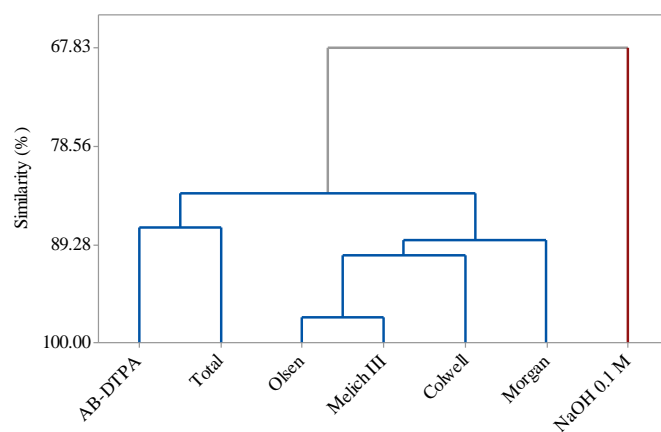


Figure 5. Cluster analysis of different extractants in the studied sediments

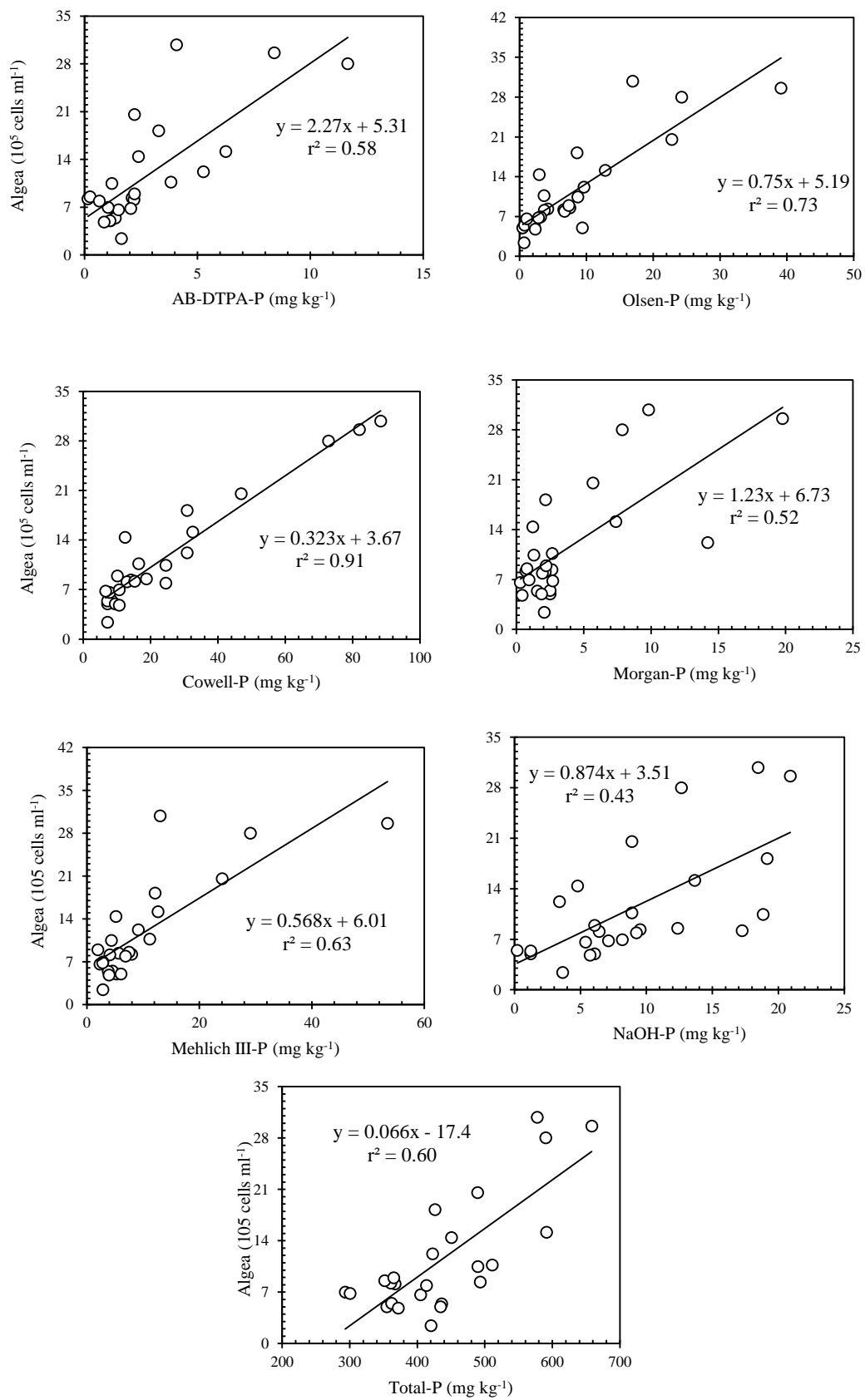


Figure 6. Relationship between algal growth and phosphorus measured by different extractants

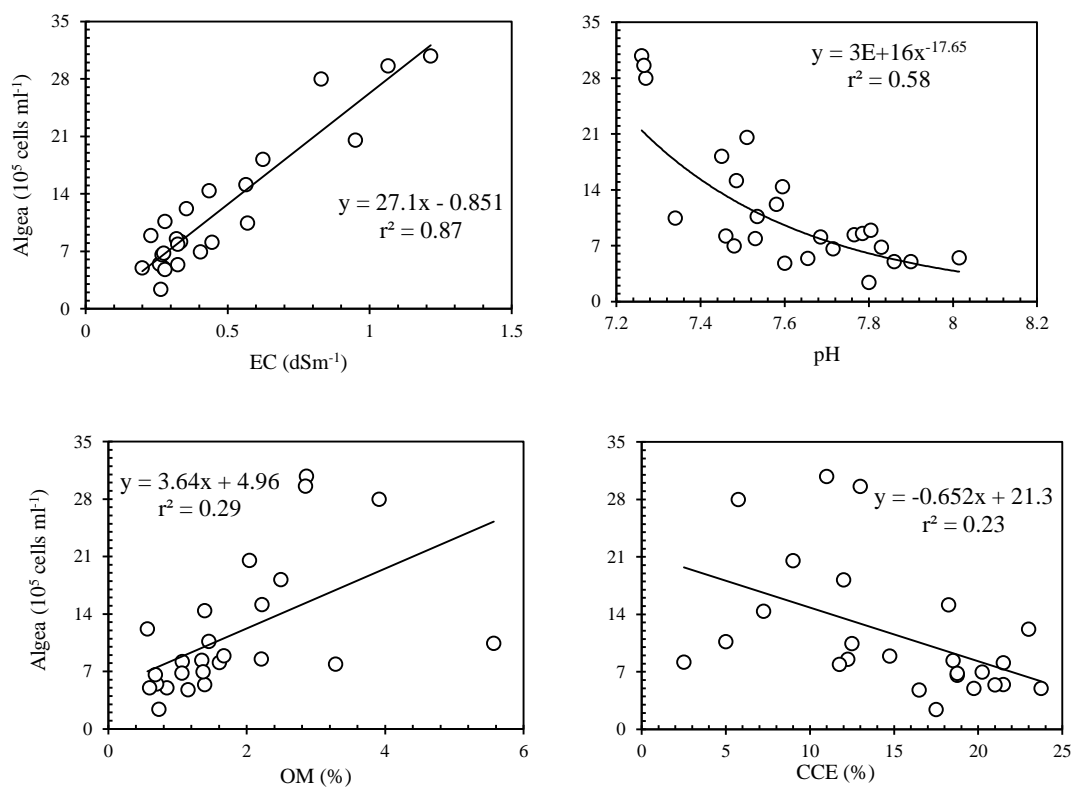


Figure 7. Relationship between sediments chemical properties with algae growth.

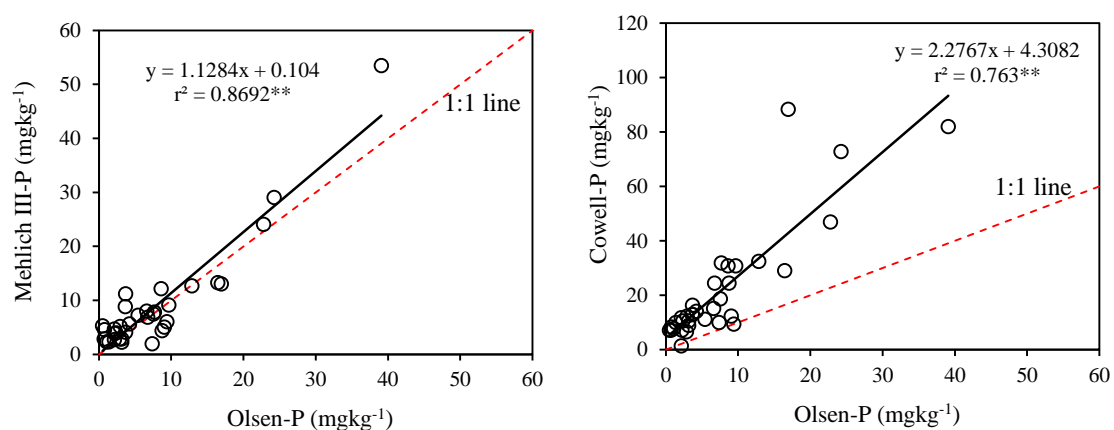


Figure 8. Relationship of Olsen-P with Cowell-P and MehlichIII-P