

Fig.1 Location of the study area

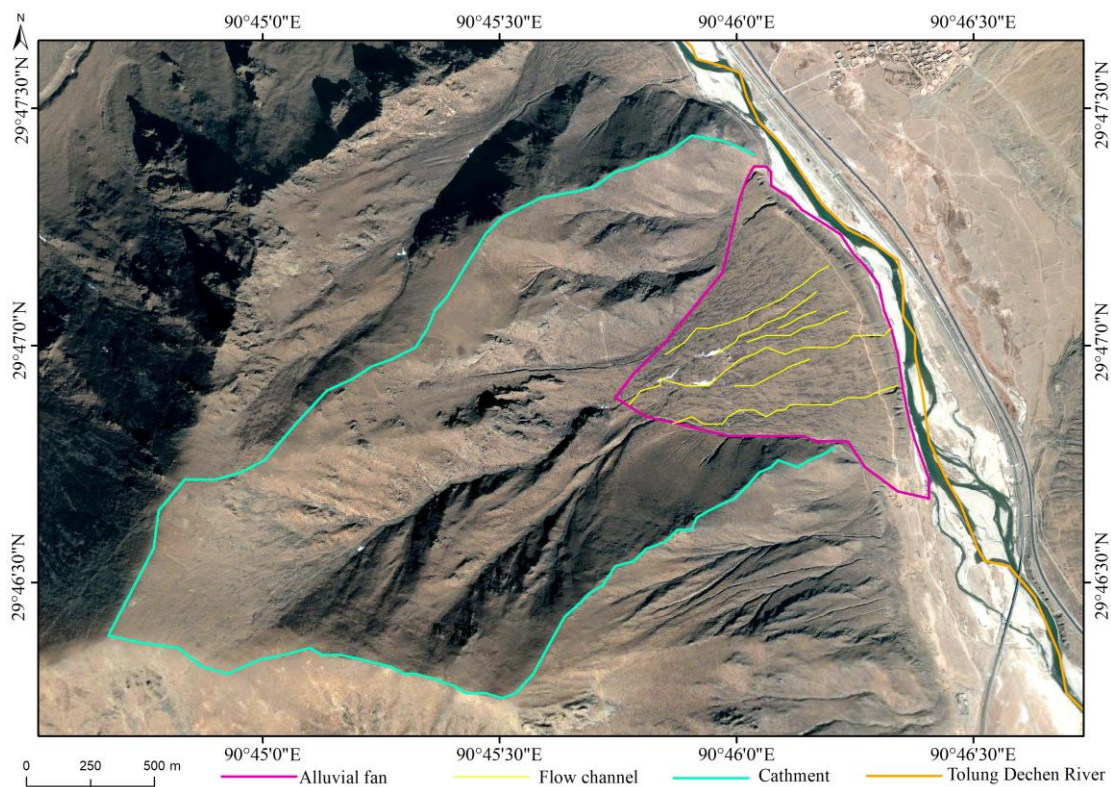


Fig.2 An alluvial fan located in LRB

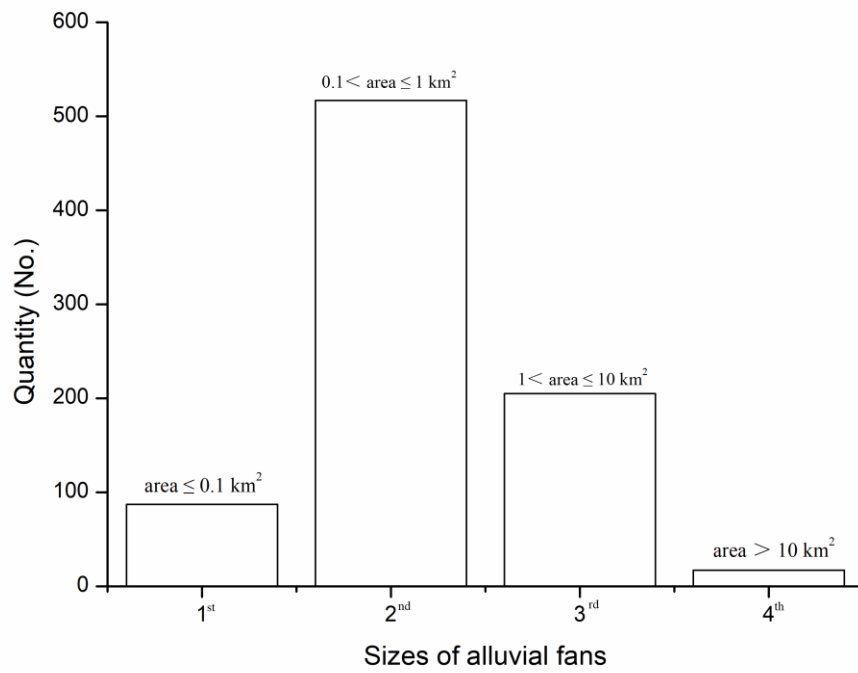


Fig.3 The quantity of alluvial fans in LRB

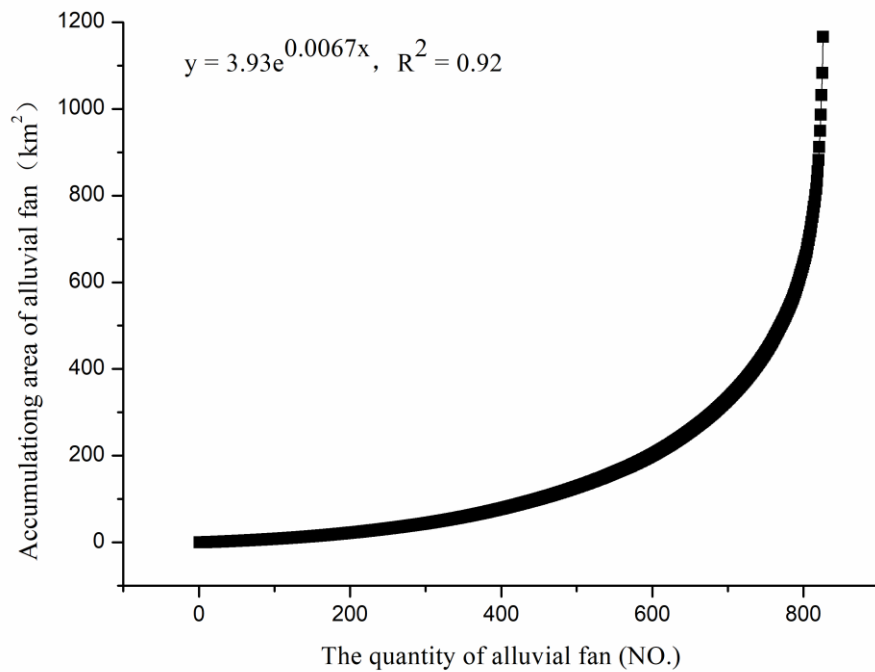


Fig4. The relationship between quantity with accumulating area of alluvial fan

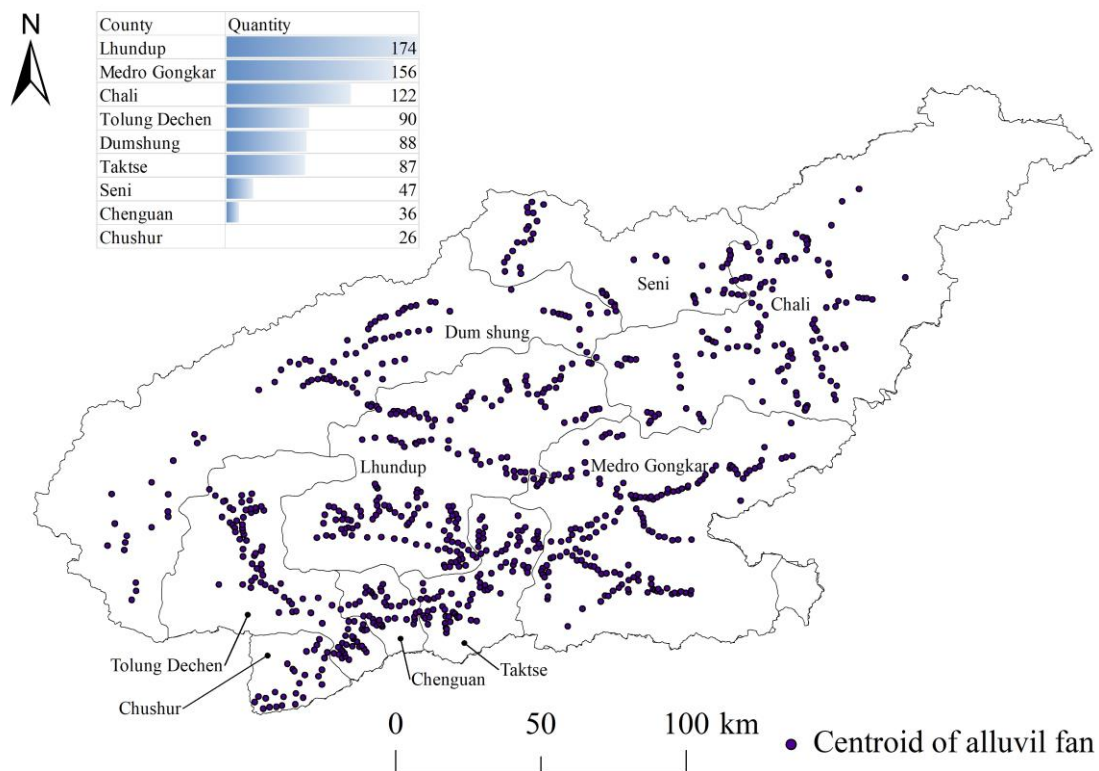


Fig5. The quantity and area distribution of alluvial fans in LRB (a. The quantity distribution)

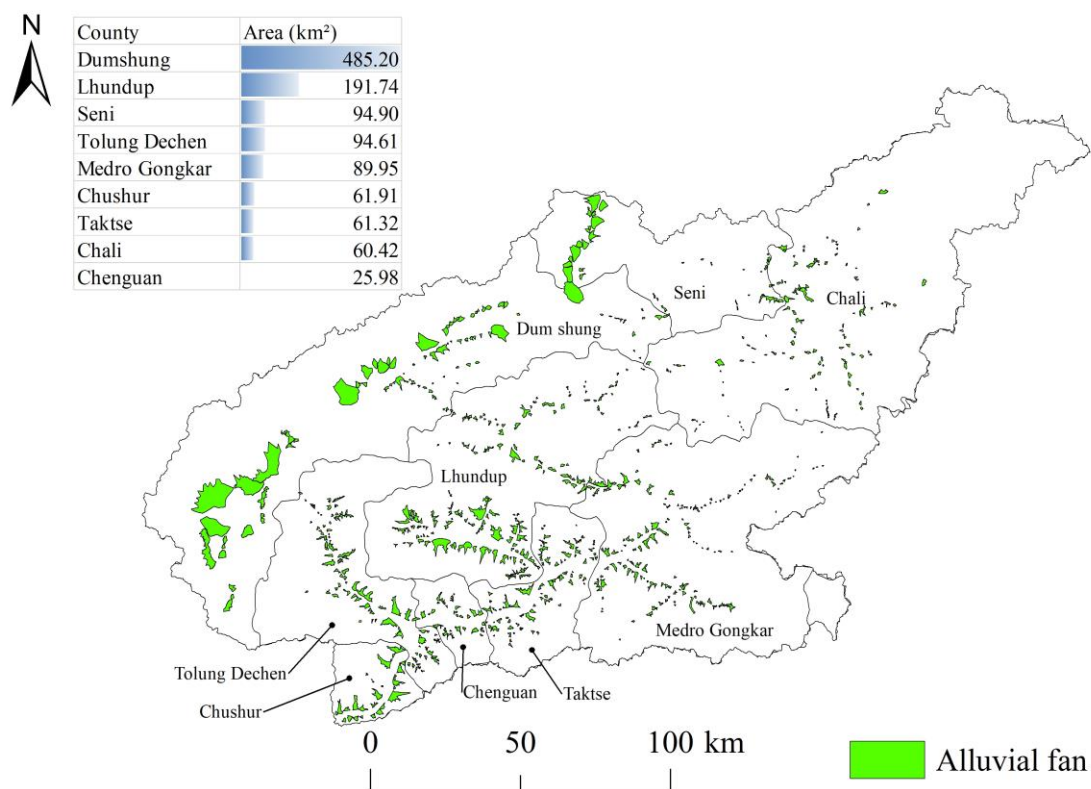


Fig5. The quantity and area distribution of alluvial fans in LRB (b. The area distribution)

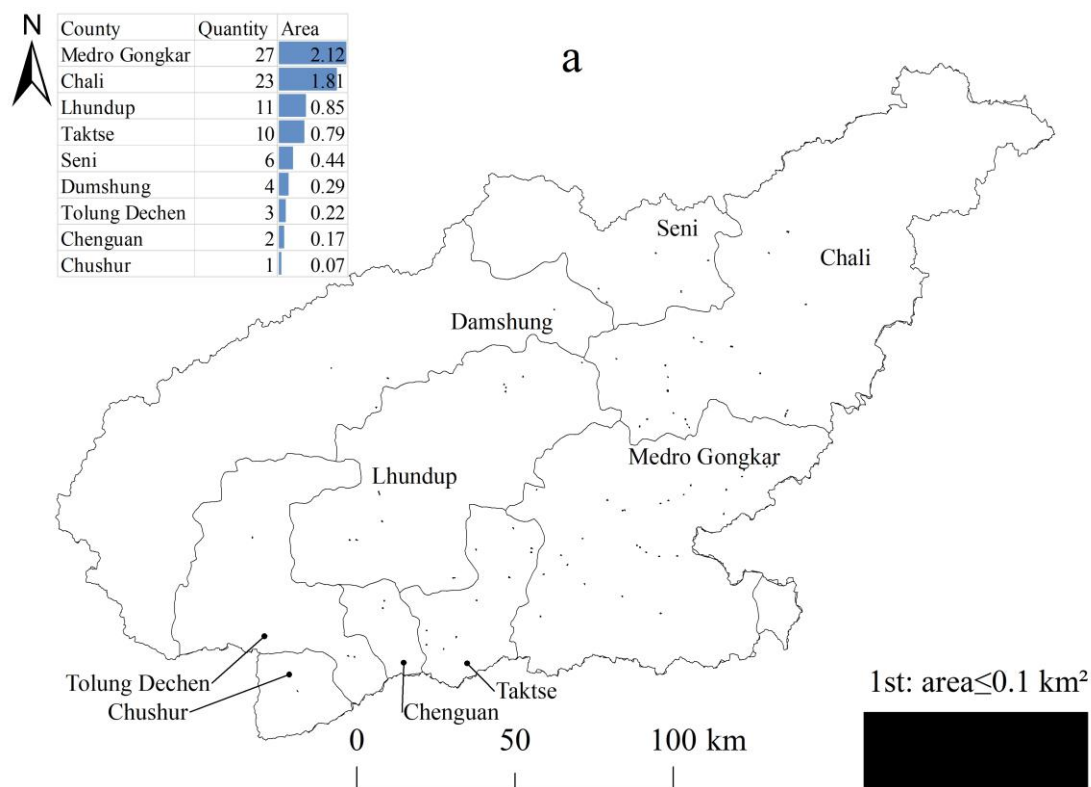


Fig6. The spatial distribution of different size alluvial fans

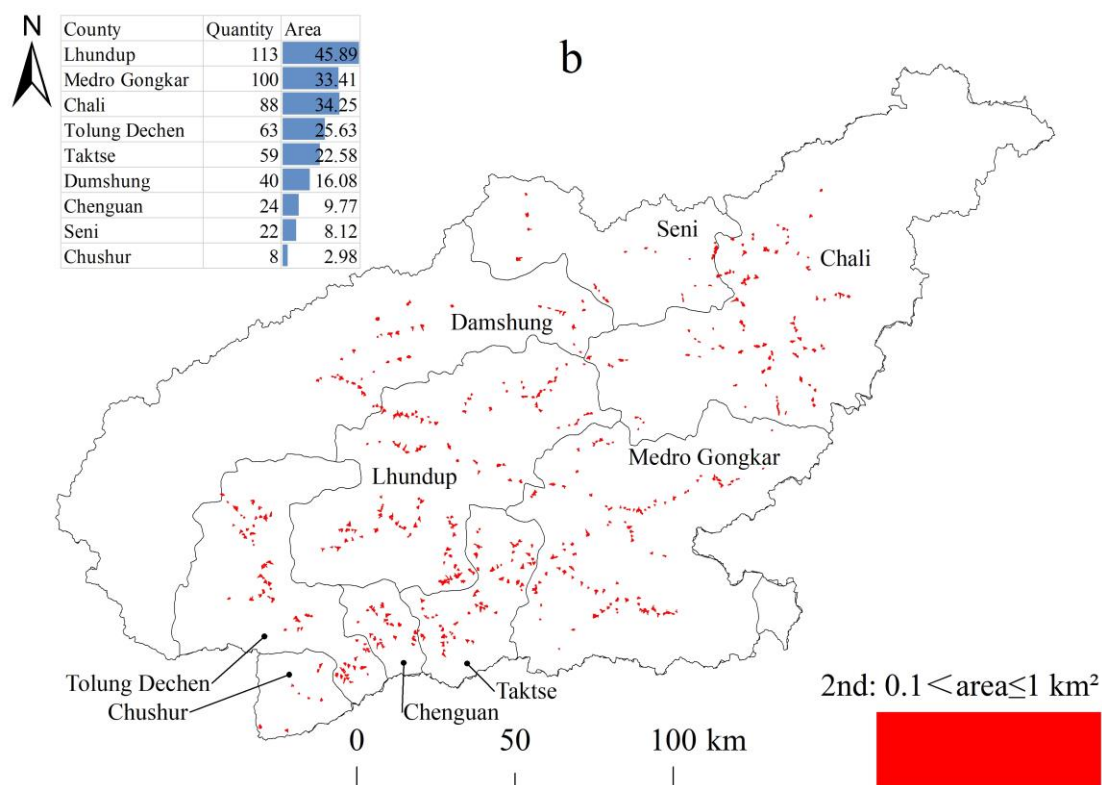


Fig6. The spatial distribution of different size alluvial fans

Fig6. The spatial distribution of different size alluvial fans

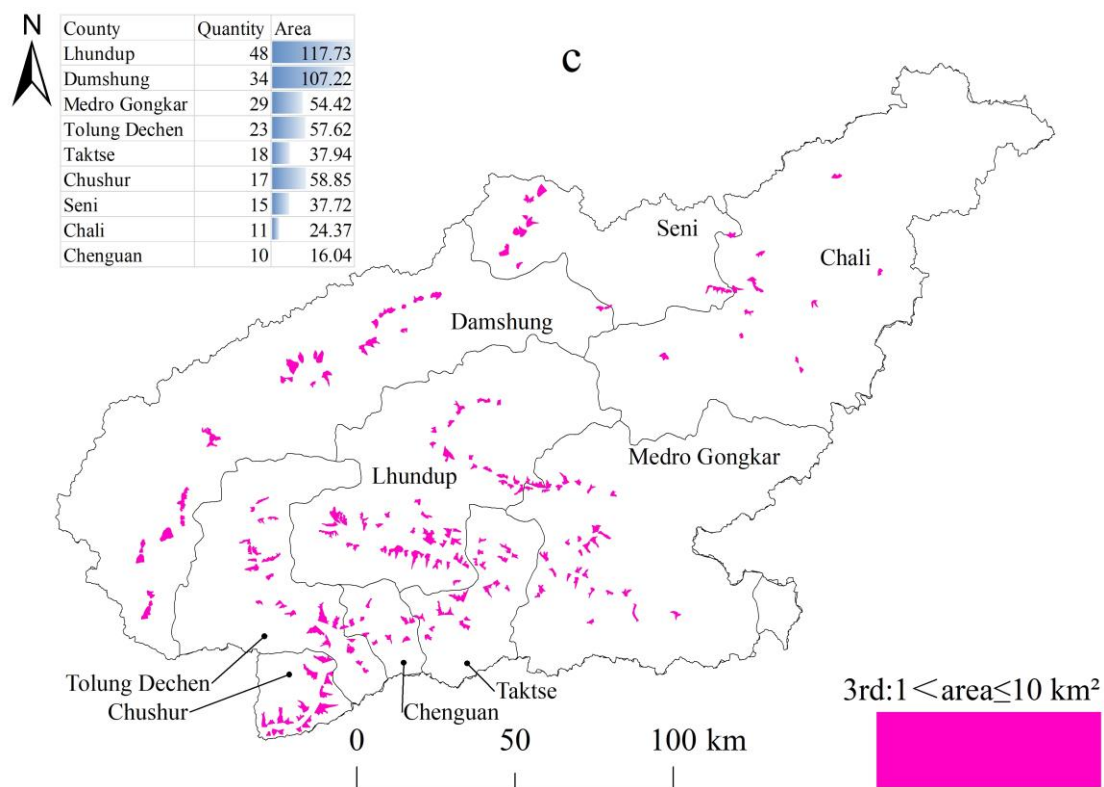


Fig6. The spatial distribution of different size alluvial fans

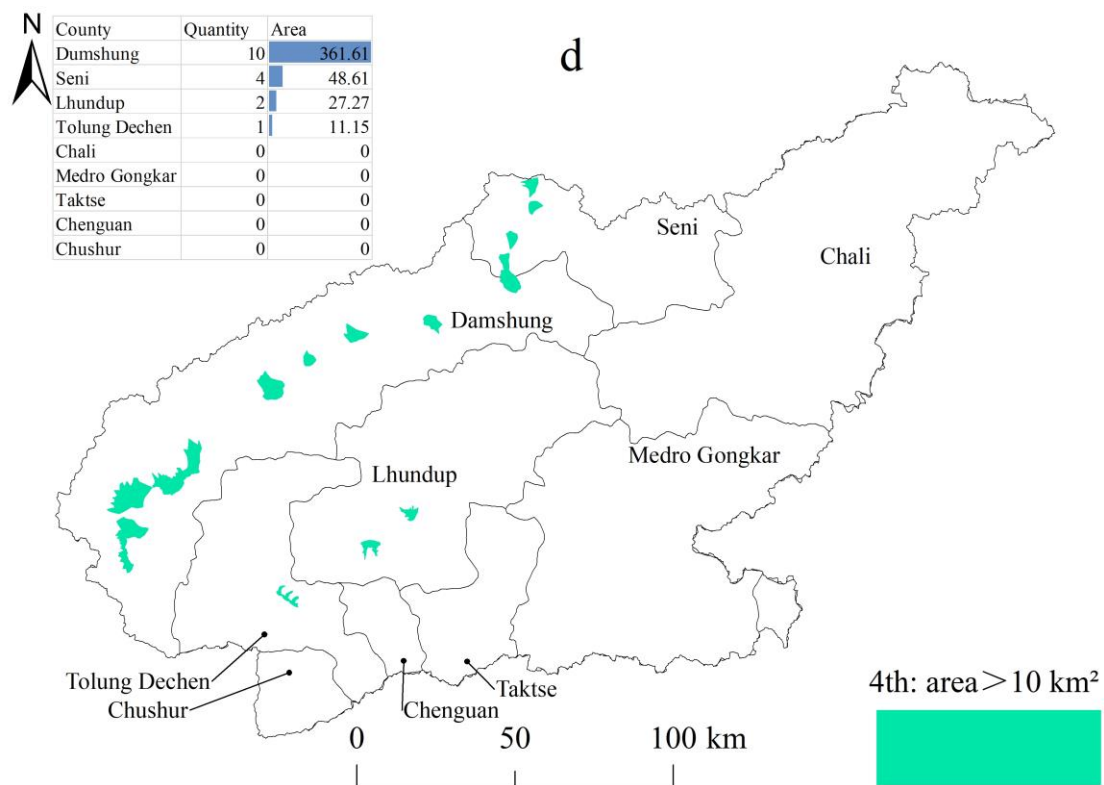


Fig6. The spatial distribution of different size alluvial fans

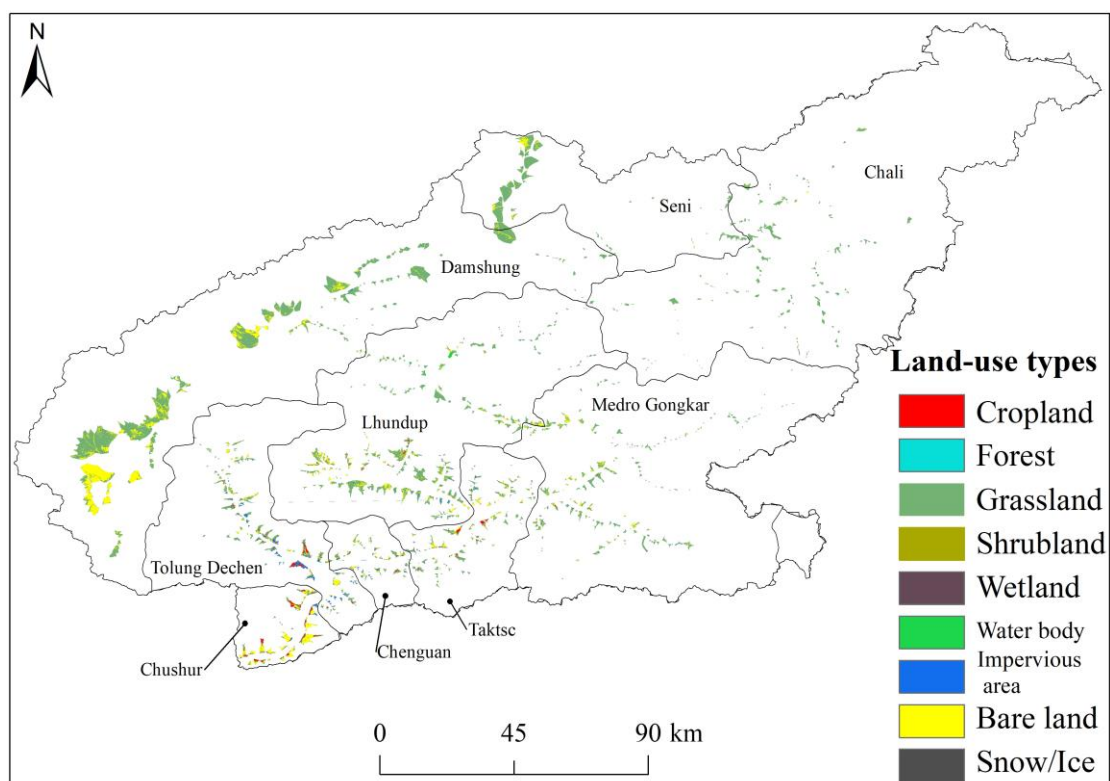


Fig7. The distribution of land-use types in Alluvial fans

The alluvial fans

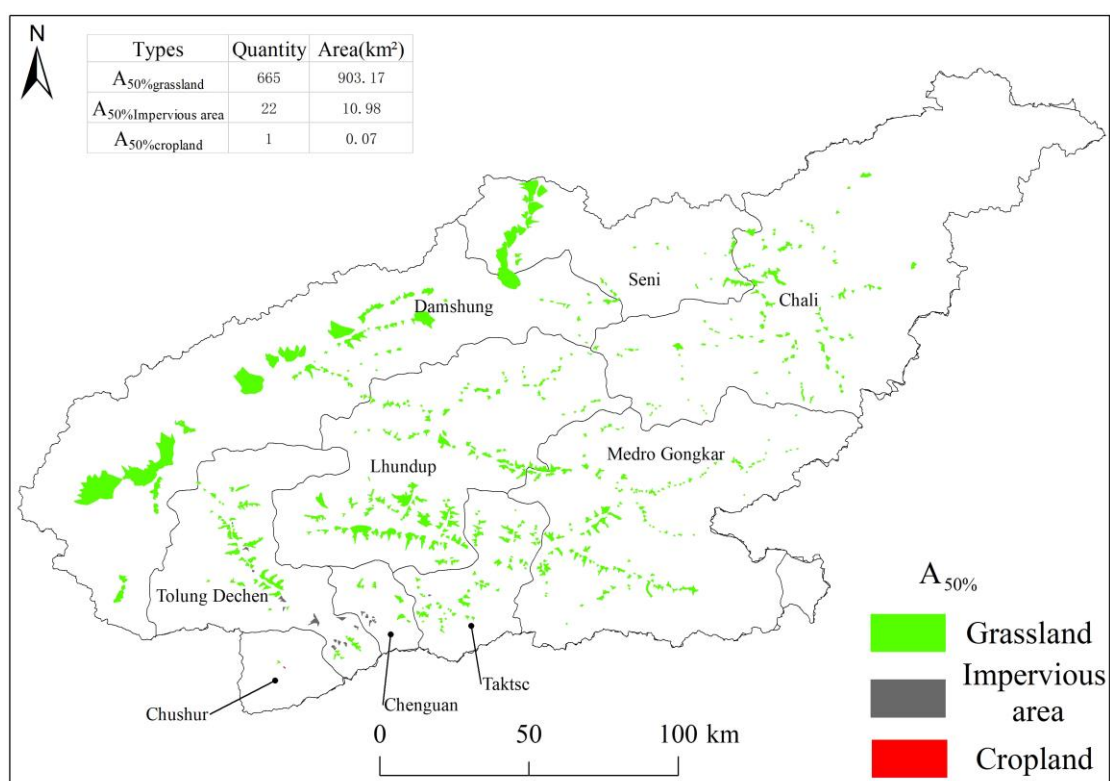


Fig.8 The distribution of alluvial fans whose area accounted by one land-use types more than

50% (A_{50%})

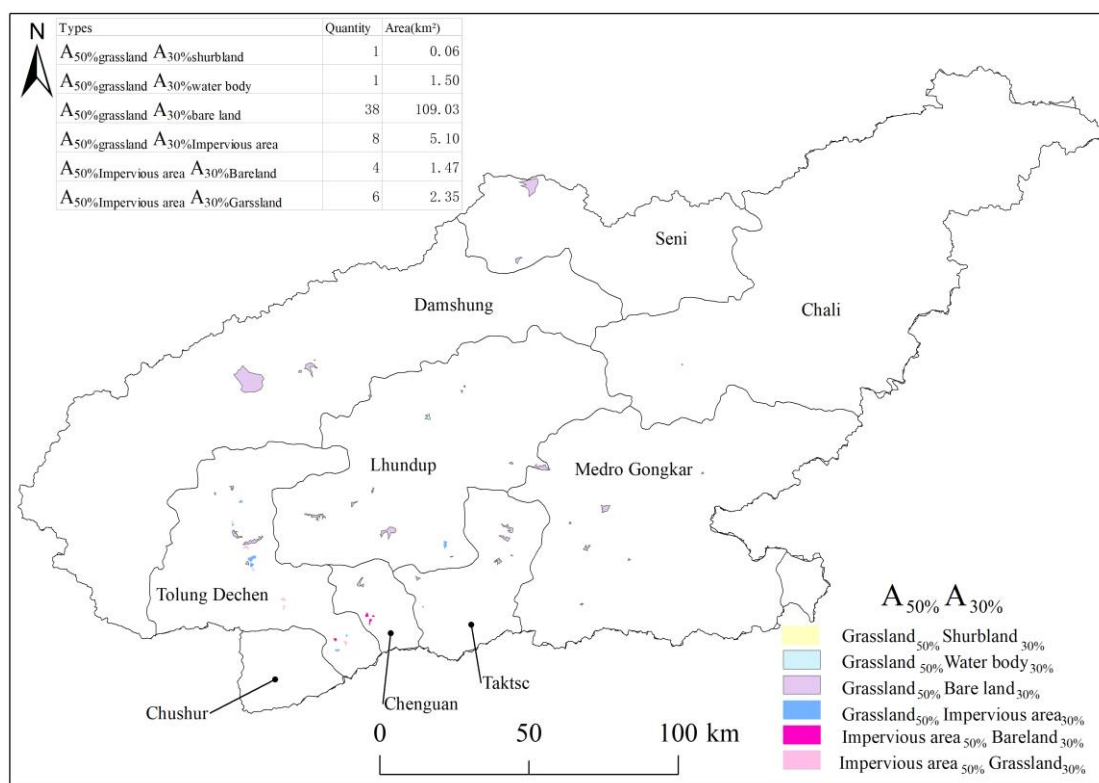


Fig.9 The distribution of A_{50%} whose area accounted by another land-use types more than 30%

(A_{50%} A_{30%})

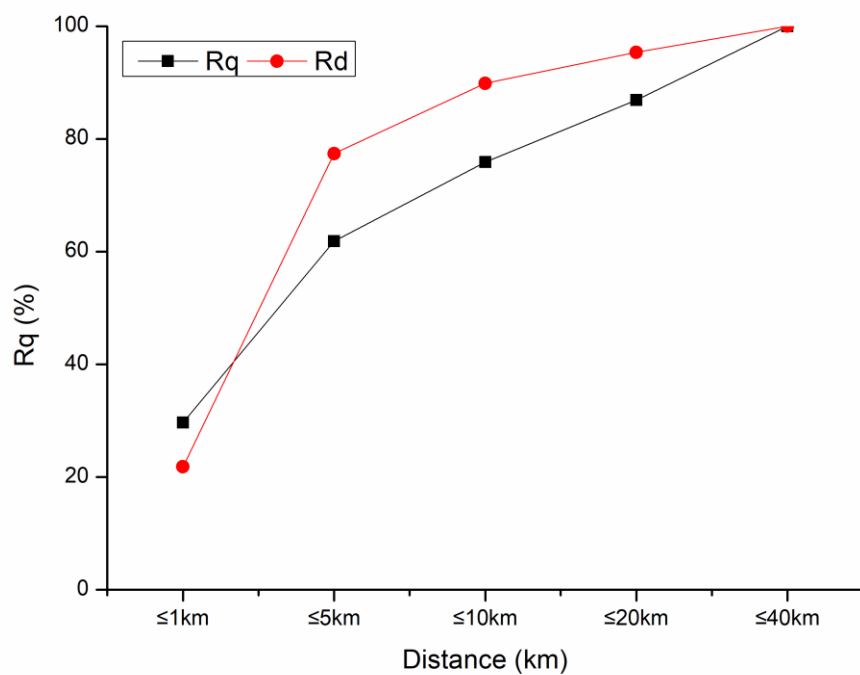


Fig10. The distance between alluvial fans and road (a. The distance to primary road)

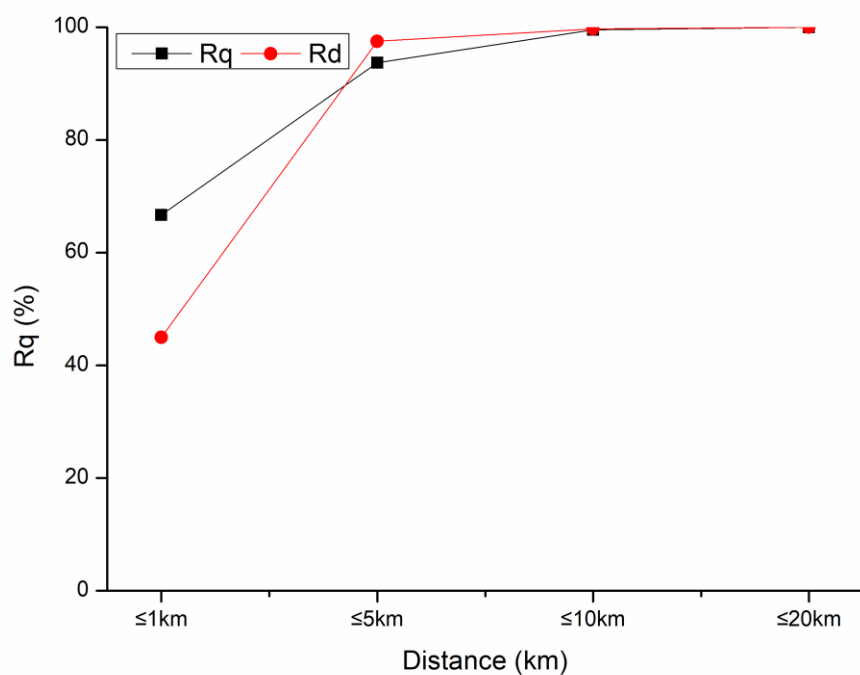


Fig10. The distance between alluvial fans and road (b. The distance to tertiary road)

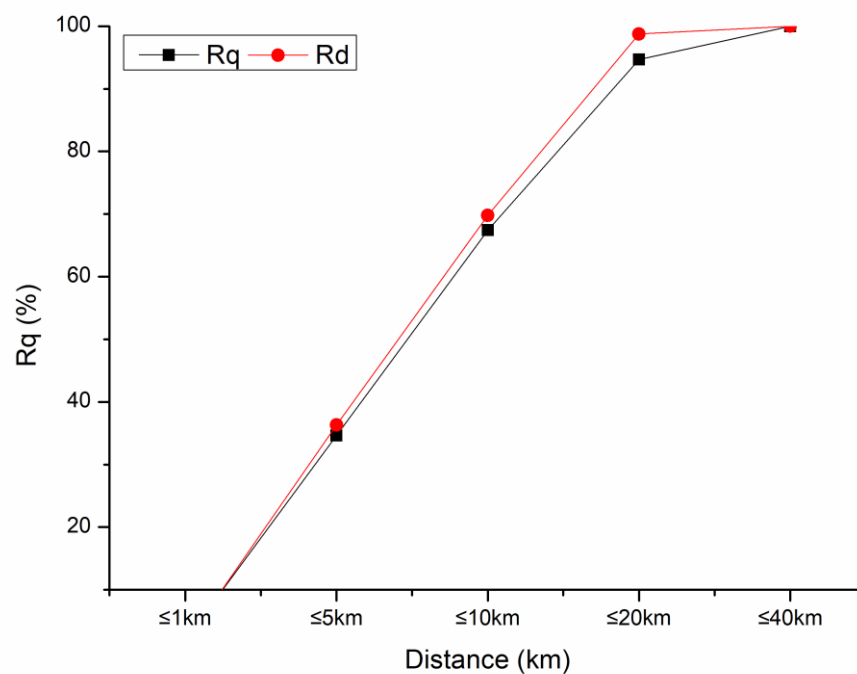


Fig.11 The distance between alluvial fans with to places (a. The distance to town)

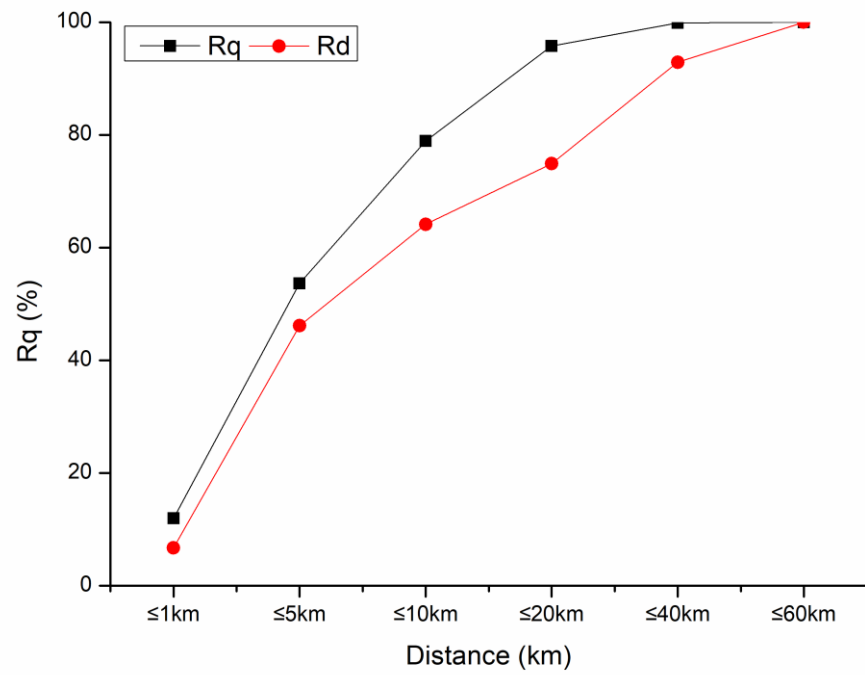


Fig.11 The distance between alluvial fans with to places (b. The distance to village)

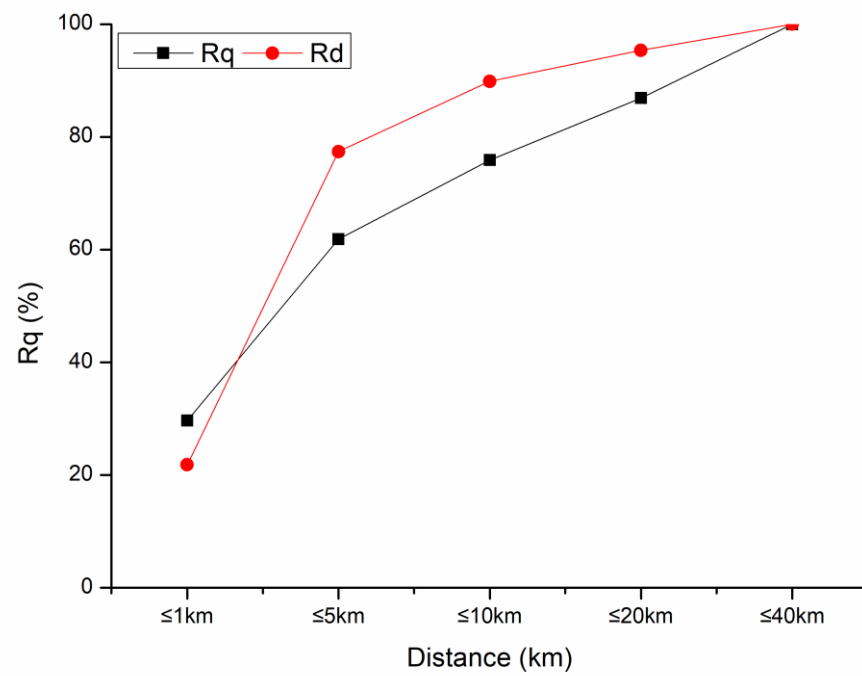


Fig12. The distance between alluvial fans to river