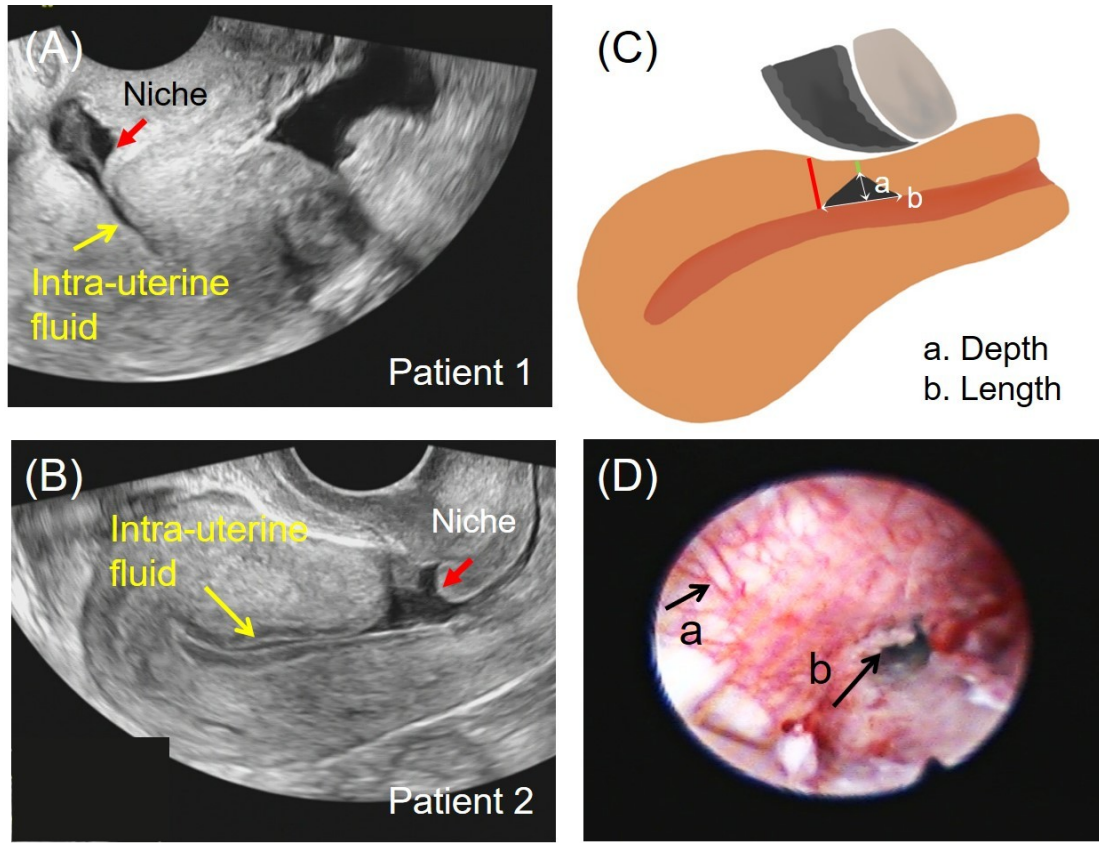


1



2

3 Fig. 1 The standardized measurement of the cesarean scar niche parameters in the
 4 non-pregnant uterus. TVS images of patient 1 (A) and patient 2 (B) during the middle
 5 follicular phase of the menstruation. (C) Niche measurement in the sagittal plane.
 6 Adjacent myometrial thickness (red line). Remaining myometrial thickness (green
 7 line). (D) Hysteroscopic image of niche. a: newly formed fragile vessels in the niche,
 8 b: Uterine cavity.