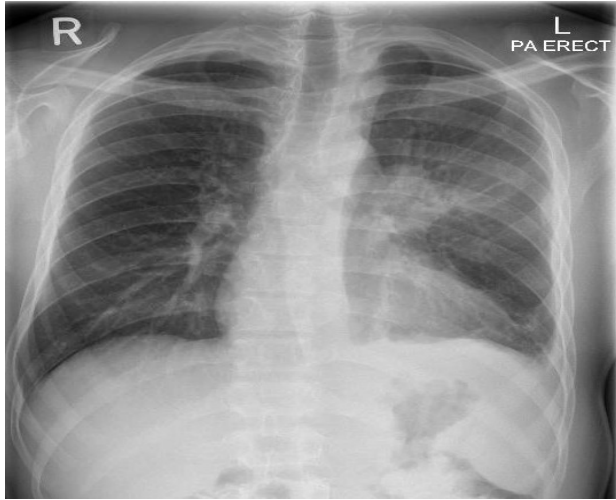


Figure 1:



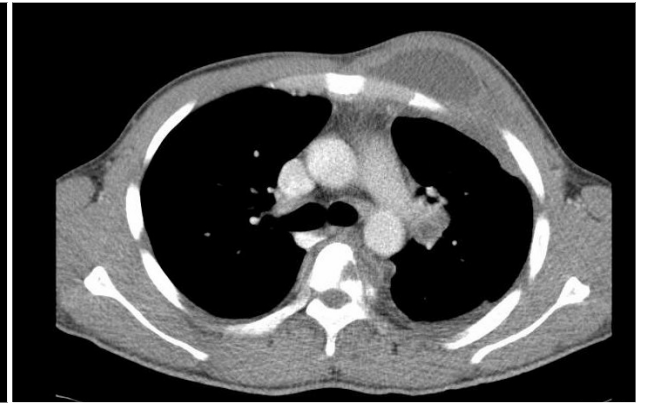
Chest x-ray showed airspace opacity is noted in the left perihilar region.

Figure

2 A

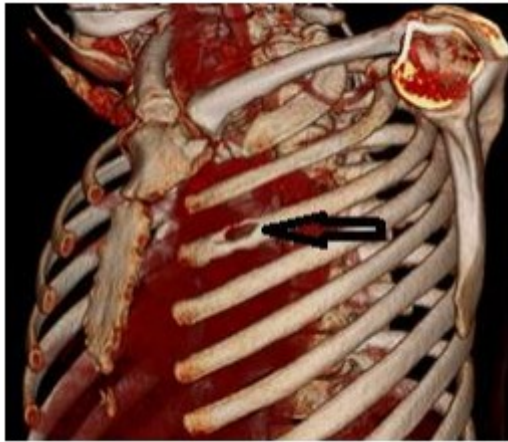


2 B



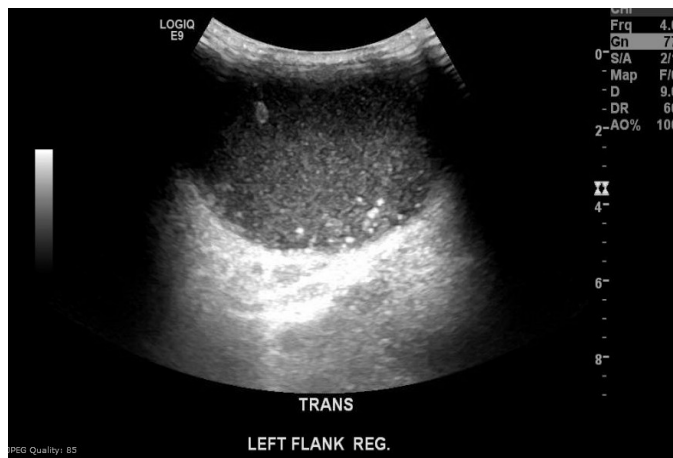
Two chest wall masses, with enlarged left hilar node showing necrosis

Figure 3:



Third rib destruction as shown by the black arrow.

Figure 4:



Ultrasound examination of the lesion in the lower chest wall showed well defined hypoechoic area, with varying degrees of internal heterogeneity.