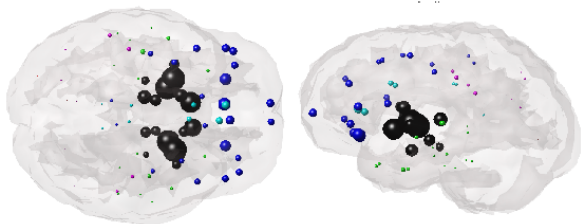
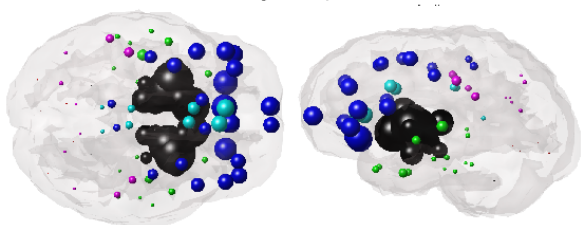


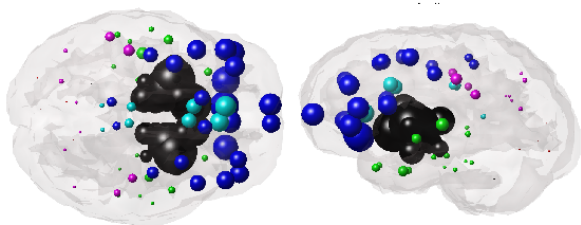
Tau spread, $t = 2$



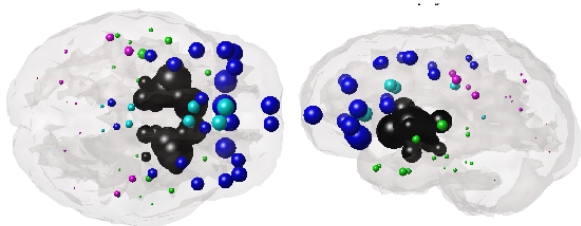
Tau spread, $t = 5$



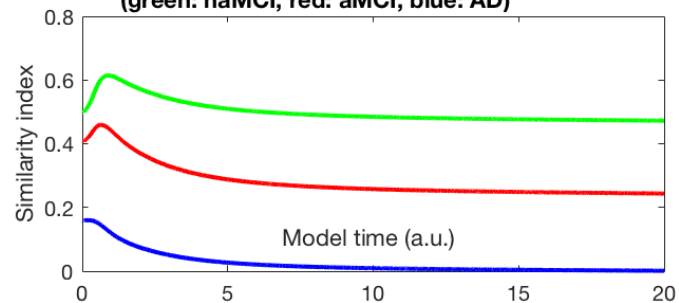
Tau spread, $t = 10$



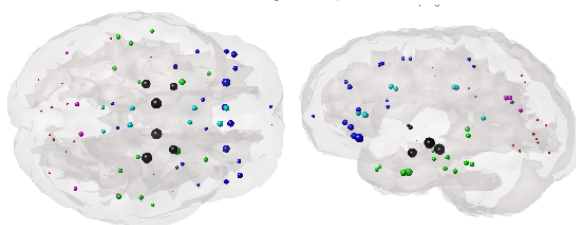
Tau spread, $t = 15$



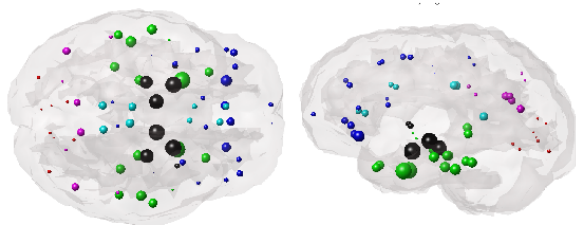
**Similarity index between model and Korea Tau uptake
(green: naMCI, red: aMCI, blue: AD)**



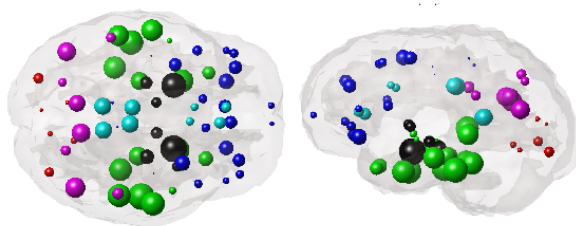
Korea naMCI tau uptake, $R_{\max} = 0.61431$



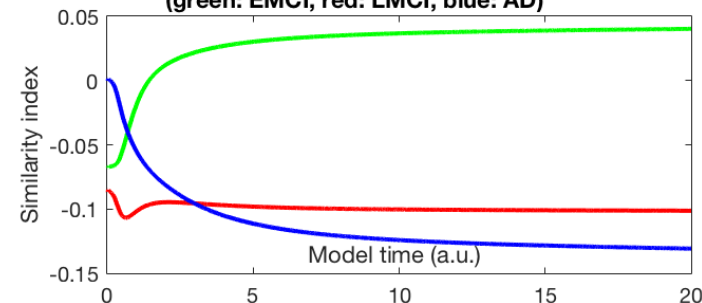
Korea aMCI tau uptake, $R_{\max} = 0.45938$



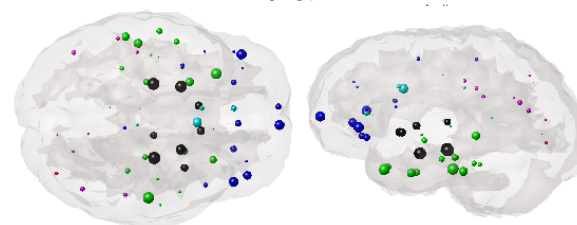
Korea AD tau uptake, $R_{\max} = 0.16019$



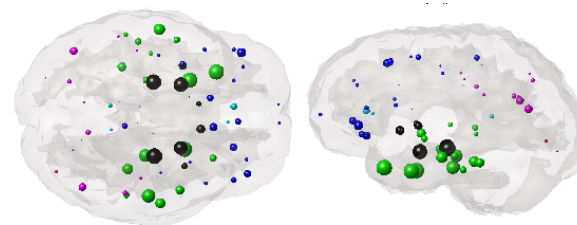
**Similarity index between model and ADNI atrophy
(green: EMCI, red: LMCI, blue: AD)**



ADNI EMCI atrophy, $R_{\max} = 0.040201$



ADNI LMCI atrophy, $R_{\max} = -0.085009$



ADNI AD atrophy, $R_{\max} = 0.0013882$

