

Figure 1(a)

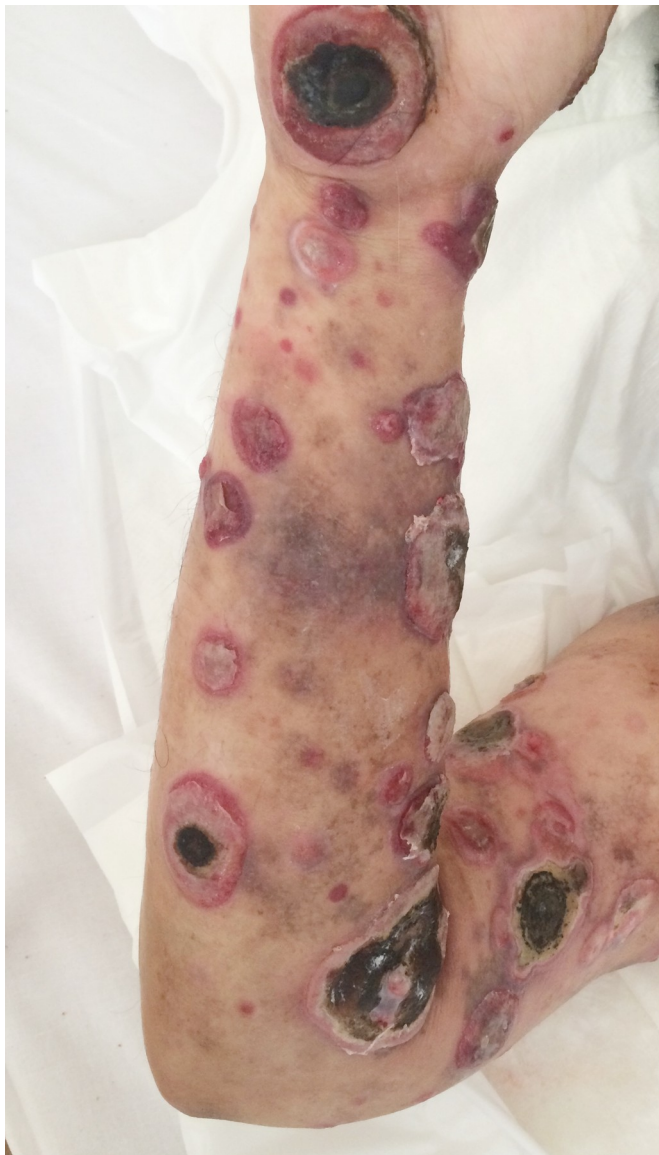


Figure1(b)

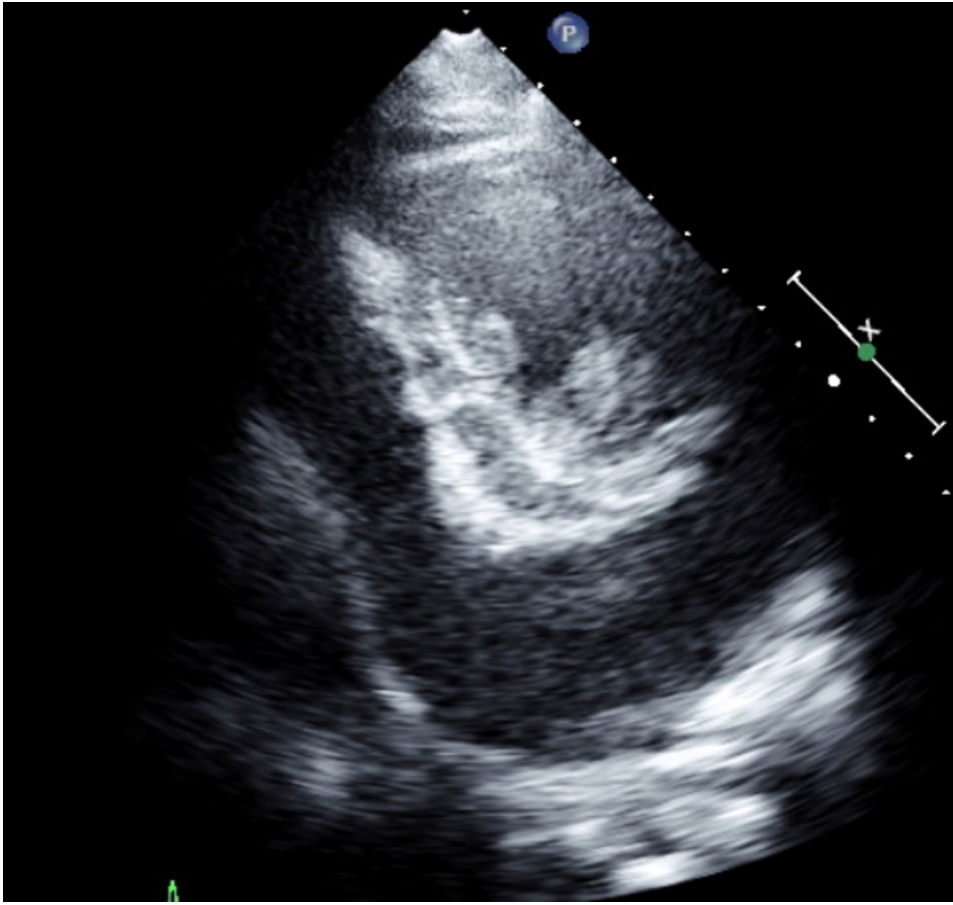


Figure1(c)

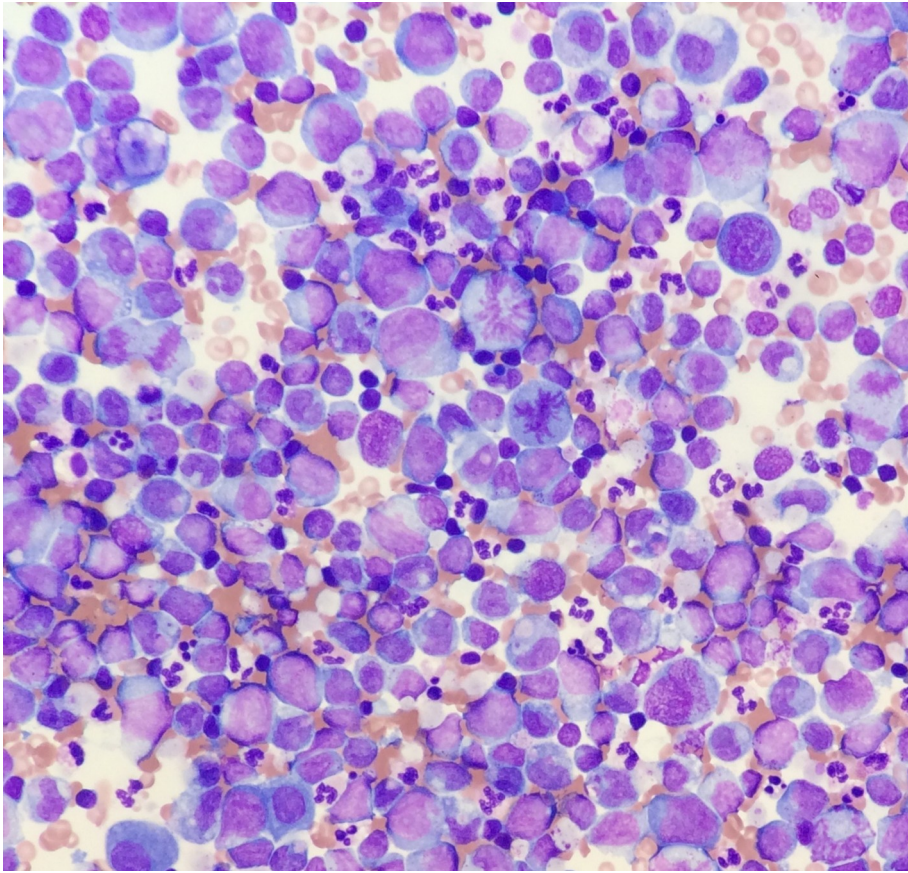


Figure. 1 (a) Tumors due to MF were found in various parts of his extremities and trunk. The tumors were protuberant, 1-10 cm in size, and the aborted areas were necrotic. (b) Echocardiographic findings showed that the left ventricle was depressurized due to pericardial effusion. (c) Cytology of the pericardial fluid showed malignant cells, and Southern blot showed T cell clonality.