

Figure 1. Study area (Mandi district Himachal Pradesh, India) along with major rivers and important towns and places.

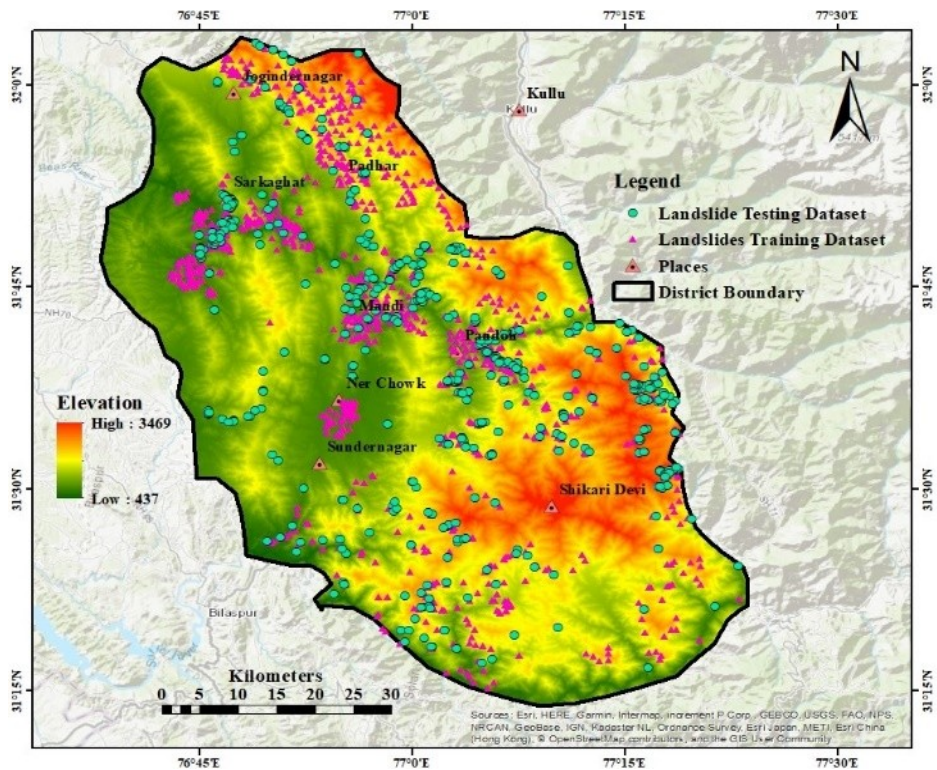


Figure 2. Landslide inventory of the study area along with training and testing datasets.

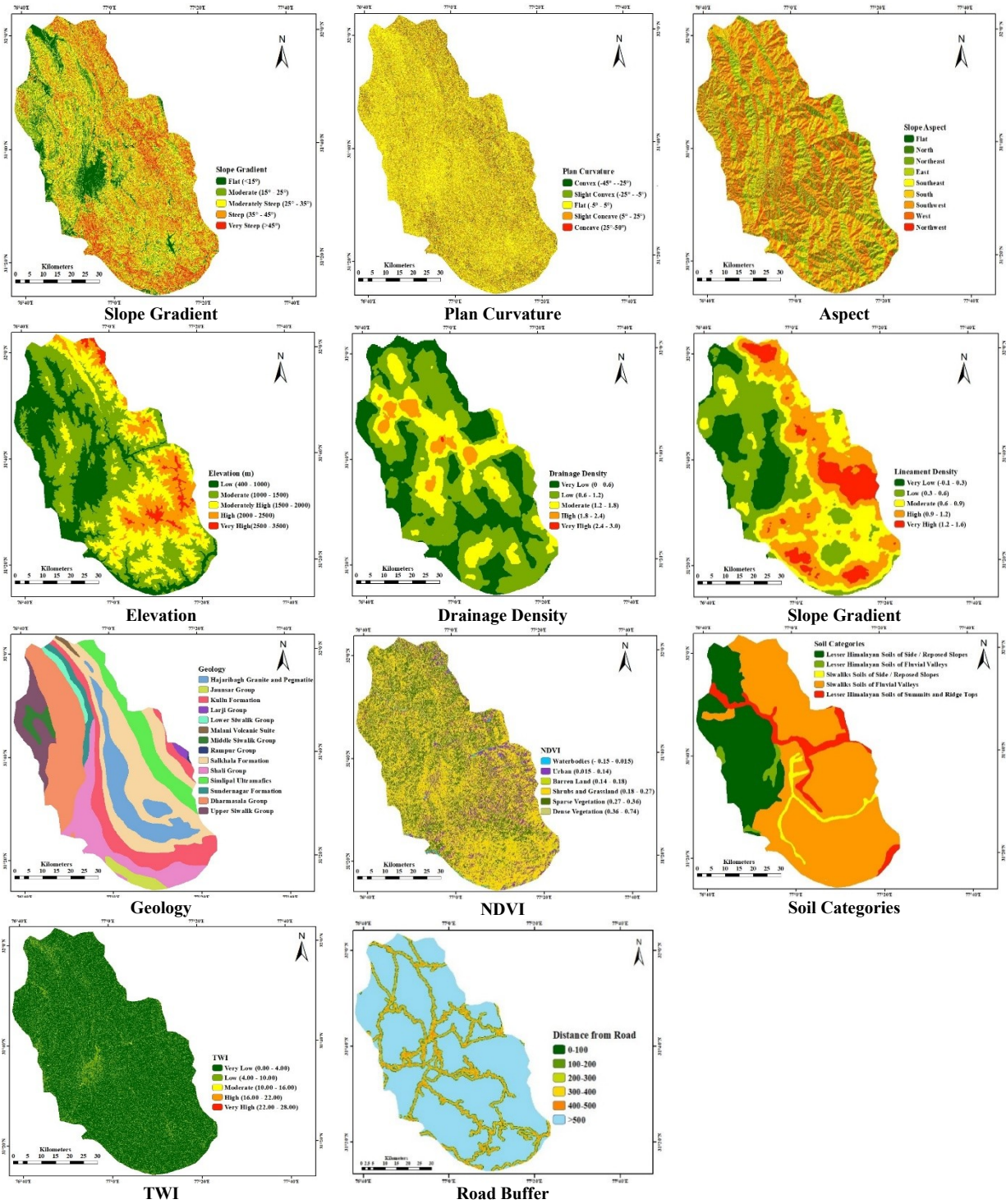


Figure 3. Landslide causative factors used for generating landslide susceptibility maps.

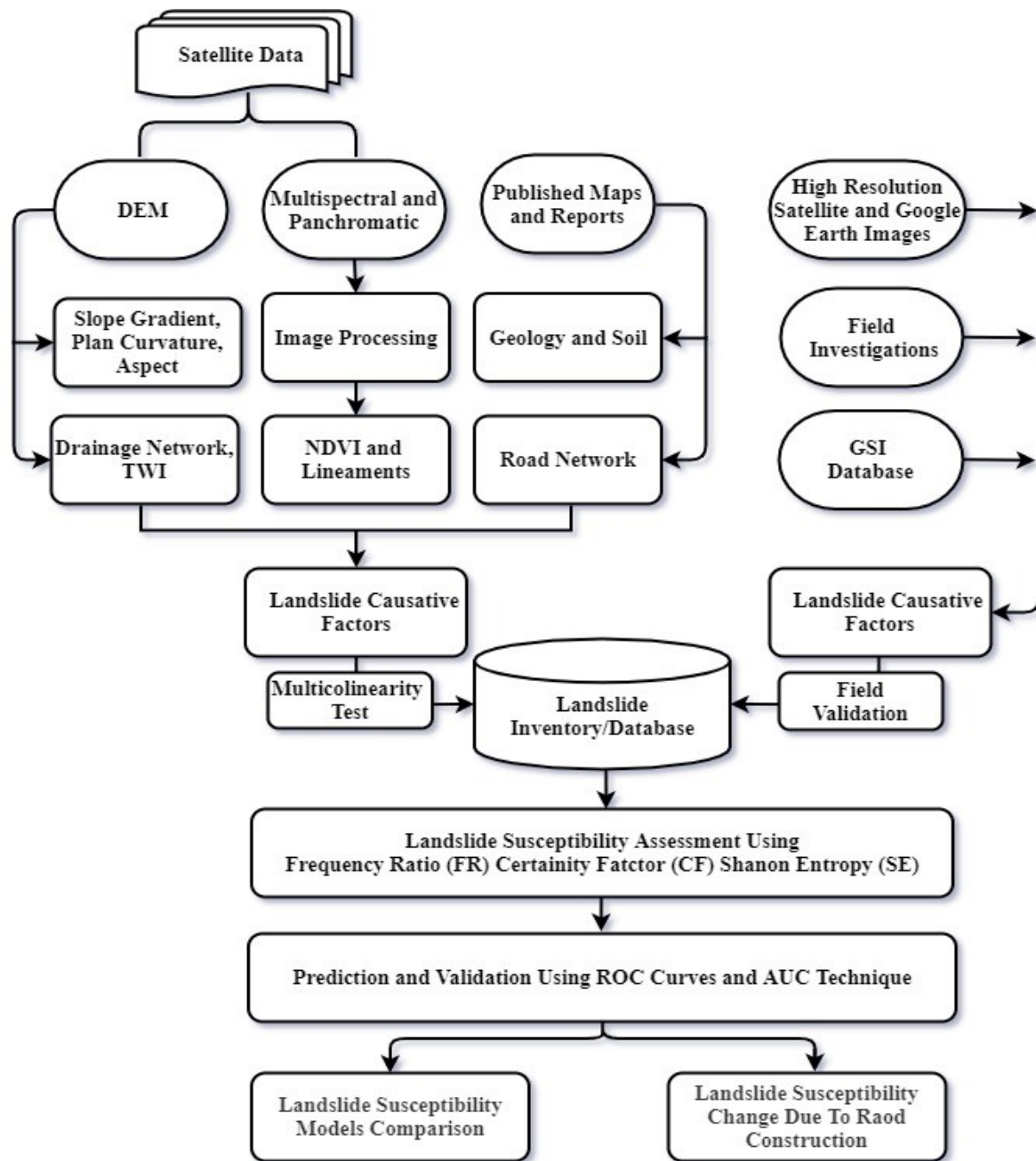


Figure 4. Flowchart of the methodology adopted for the study.

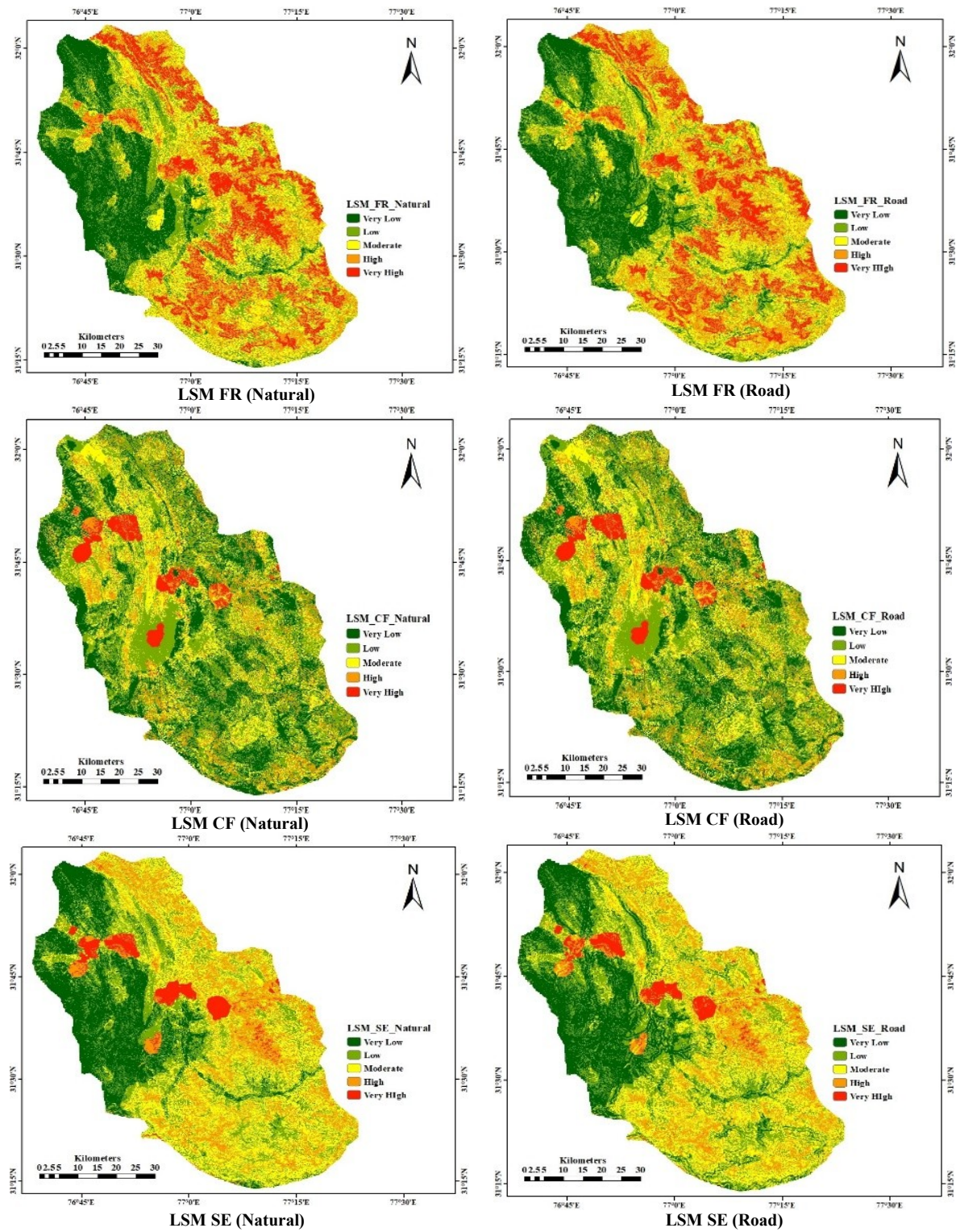


Figure 5. Landslide susceptibility maps (natural and road) of the study area generated using FR, CF and SE models.

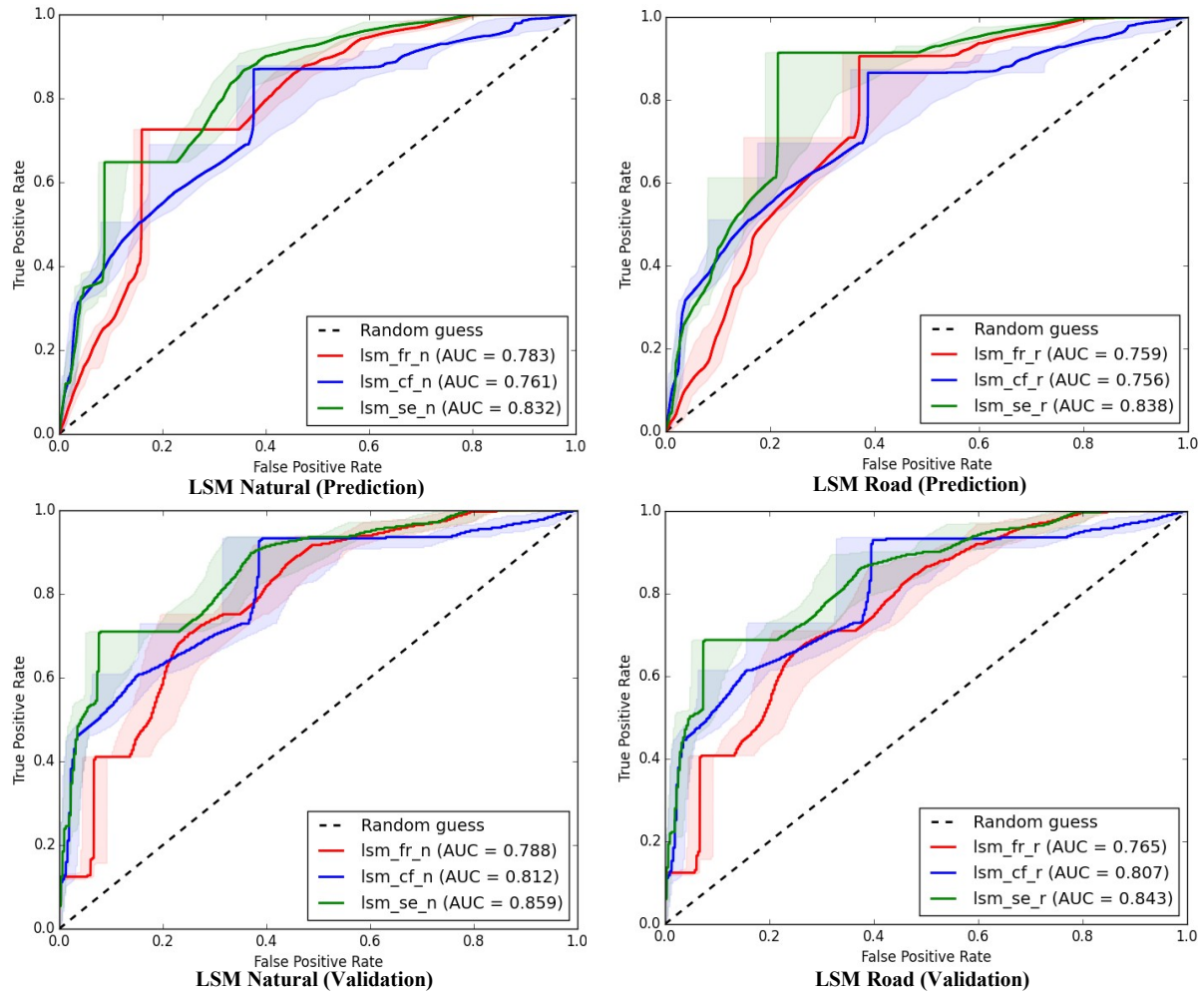


Figure 6. ROC curves with AUC values for accuracy prediction and validation of models.