

Figures

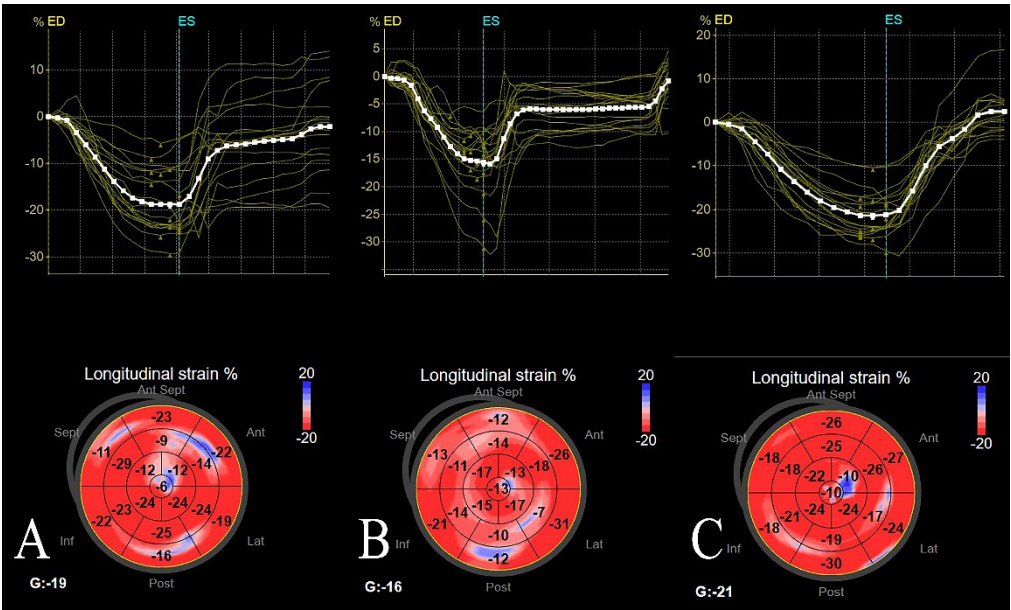


Figure 1: Comparison of 3D-STI Strain Parameters GLS in the three studied groups. A: mild-to-moderate group; B: severe group; C: control group

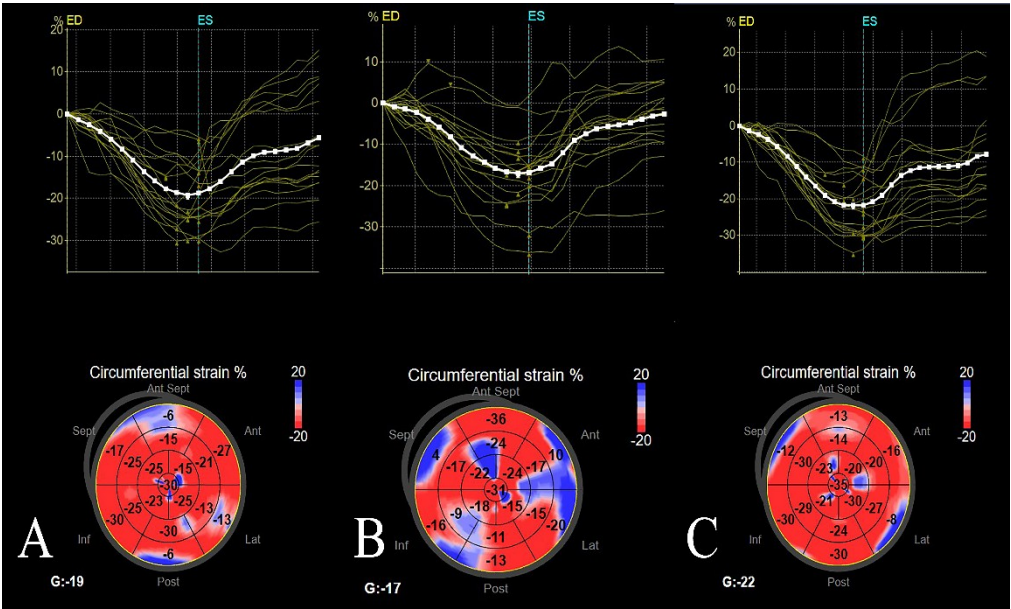


Figure 2: Comparison of 3D-STI Strain Parameters GCS in the three studied groups. A: mild-to-moderate group; B: severe group; C: control group

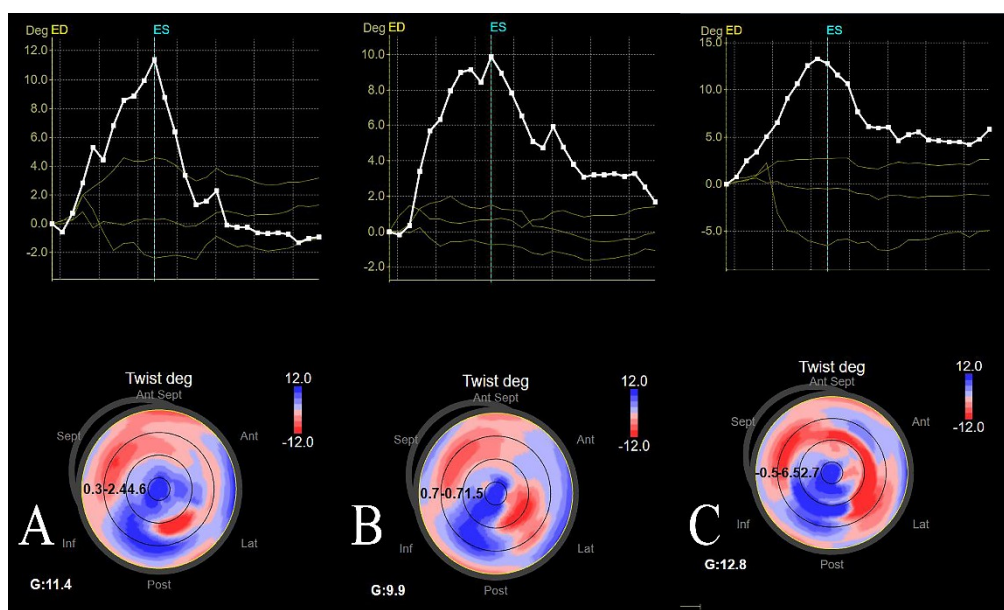


Figure3: Comparison of 3D-STI Strain Parameters LVtw in the three studied groups. A: mild-to-moderate group; B: severe group; C: control group

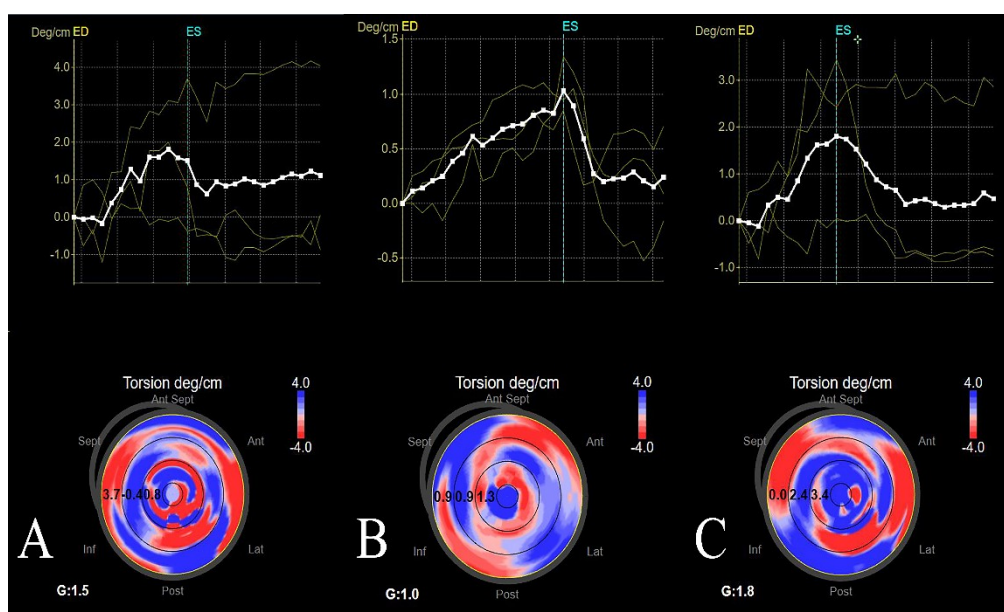


Figure4: Comparison of 3D-STI Strain Parameters Tor in the three studied groups. A: mild-to-moderate group; B: severe group; C: control group

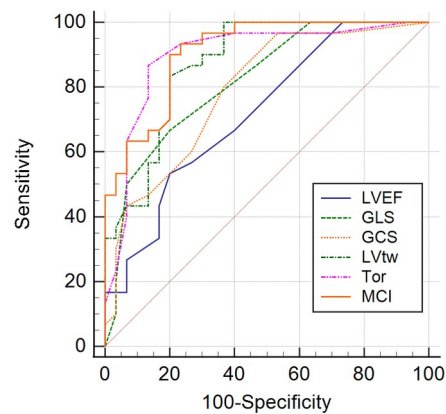


Figure 5: ROC Curve of 3D-STI Parameters in the Diagnosis of Cardiac Function in Patients with SLE

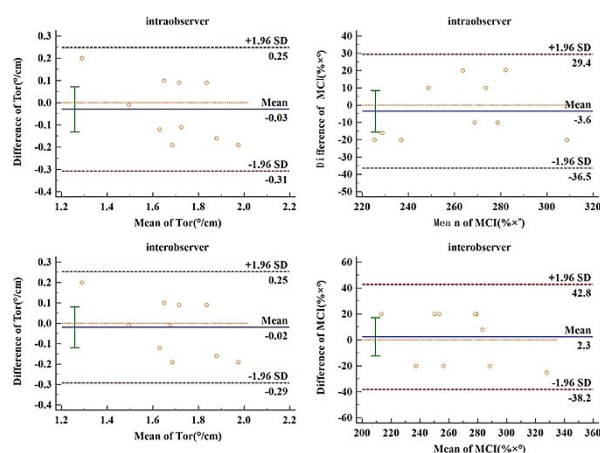


Figure 6: 3D strain Parameters: Left ventricular Tor and MCI repeatability test (Bland–Altman diagram)