

Figure 1 A nomogram for predicting the rehabilitation benefits in late-implemented young patients with prelingual deafness, incorporating four clinical parameters: age, residual hearing and regular CI use.

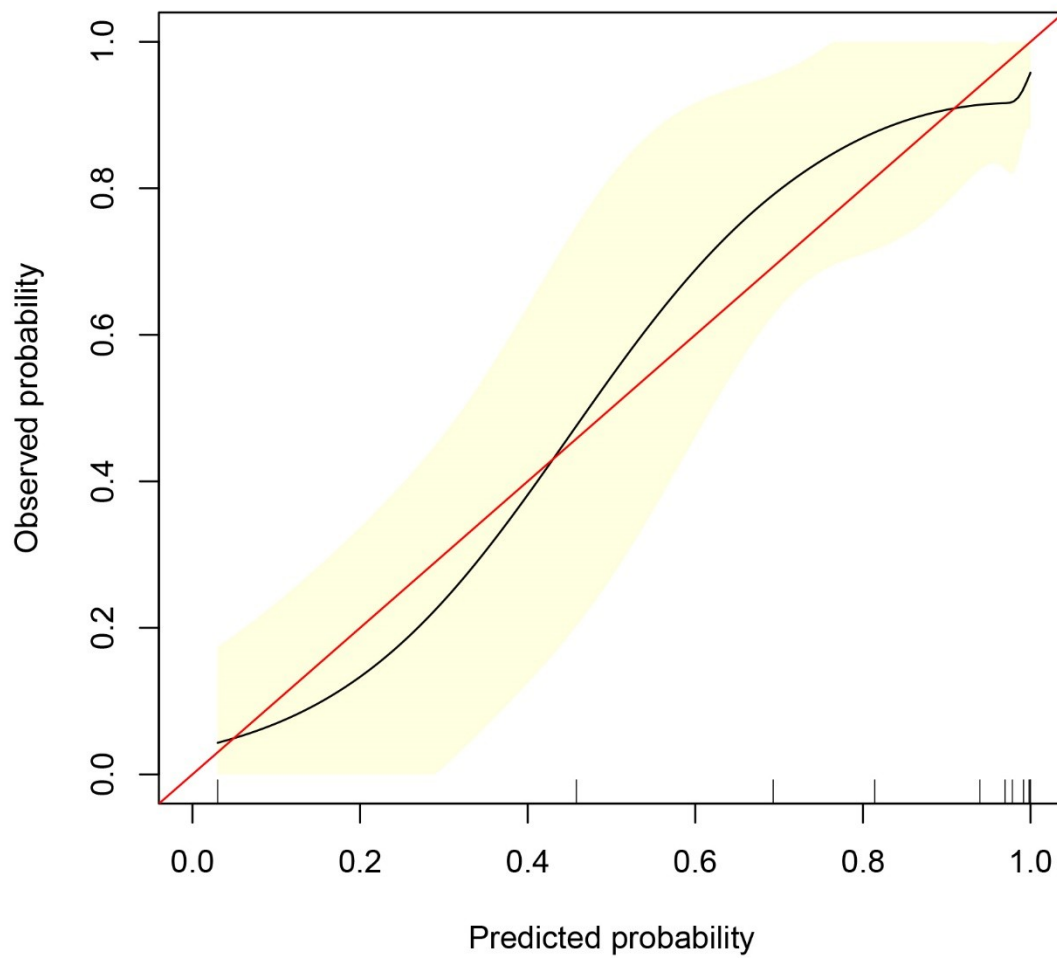


Figure 2 Calibration curve of the nomogram. Redline represents a perfect prediction.

Blackline represents the predictive performance of the nomogram. The yellow area indicates the 95% confidence interval.

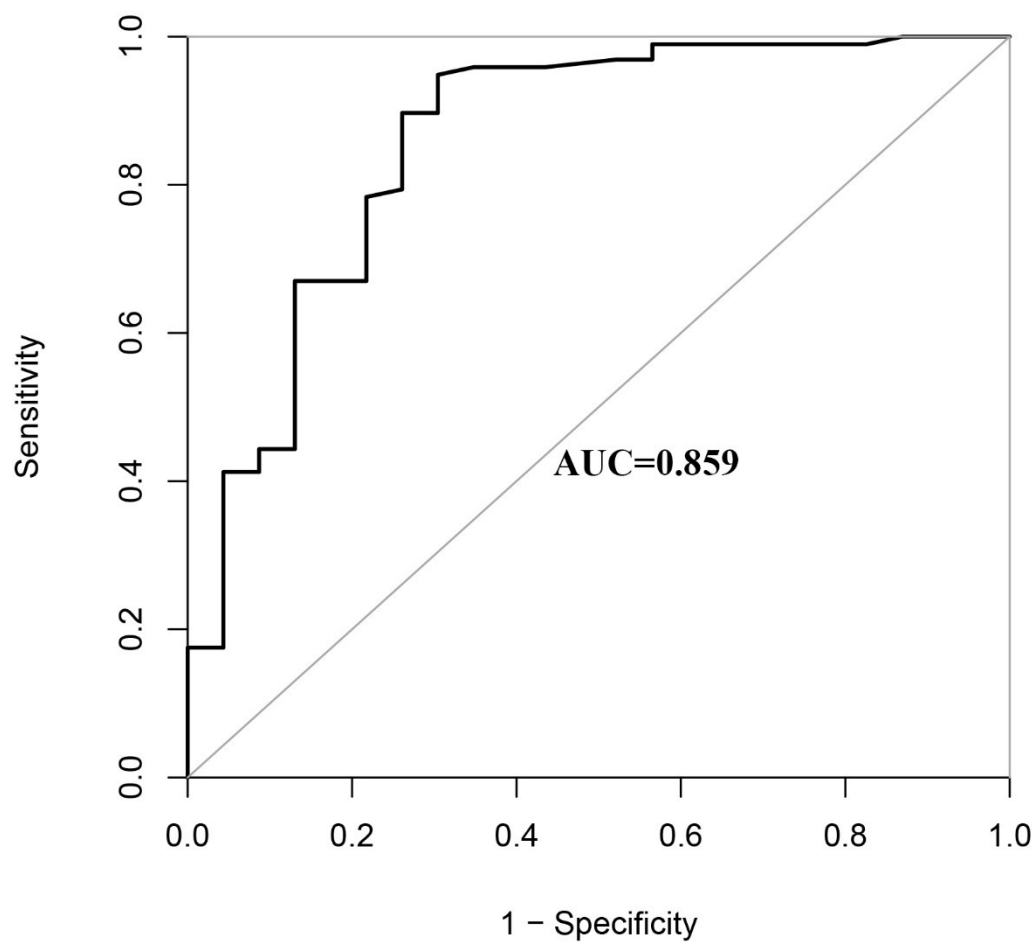


Figure 3 Receiver operating characteristic curve of the model