

Figure 1

Preoperative transesophageal echocardiography showing vegetations on aortic valve leaflets with severe regurgitation and turbulent jets into the right ventricle.



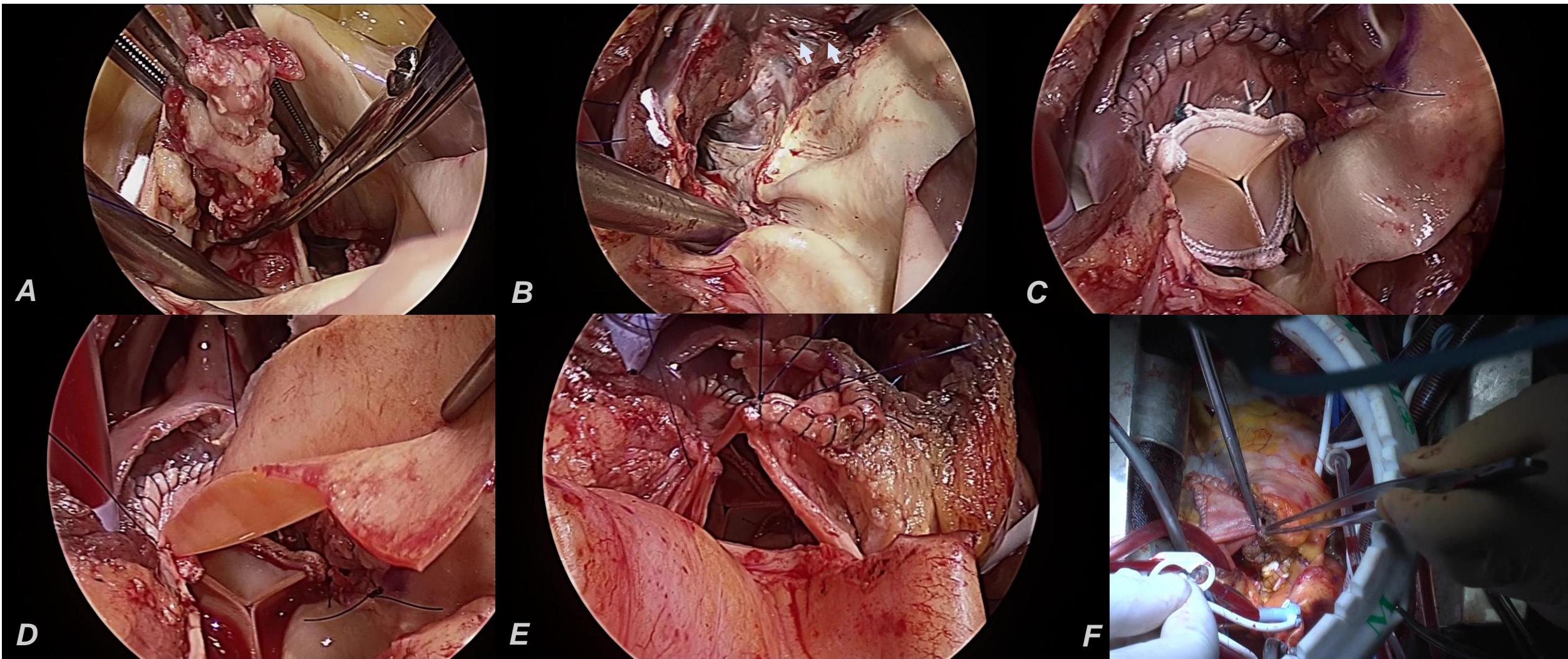


Figure 2

Surgical procedures: Photos **A** and **B** show thorough and extensive debridement of the aortic root and ventricular septum, and identified fistulas (arrows) to the right ventricle. Photo **C** shows the reconstructed ventricular septum and a placed bioprosthetic valve. Photos **D** and **E** show the reconstructed right coronary sinus of Valsalva. Photo **F** shows closure of the right ventricular outflow tract.



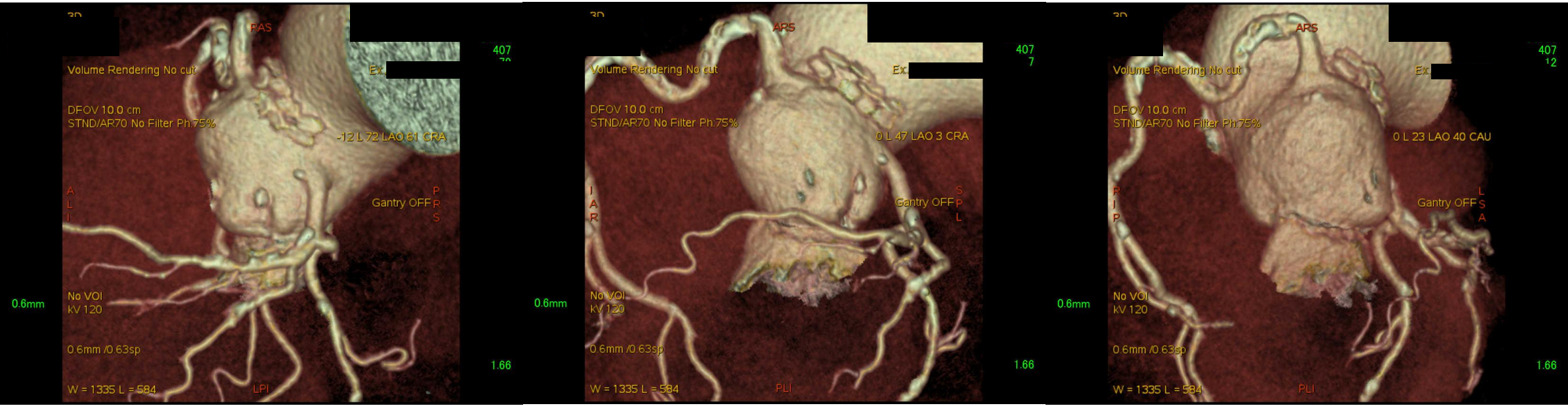


Figure 3

Postoperative 3-dimensional computed tomography showing correctly reconstructed aortic root.