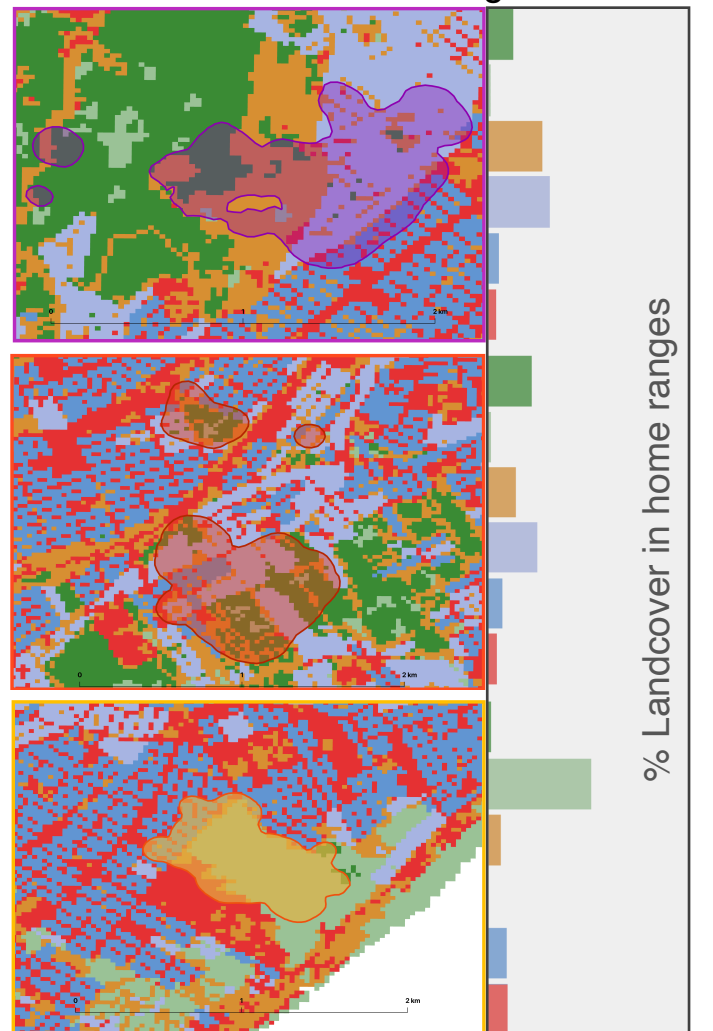


(a) Observed home ranges



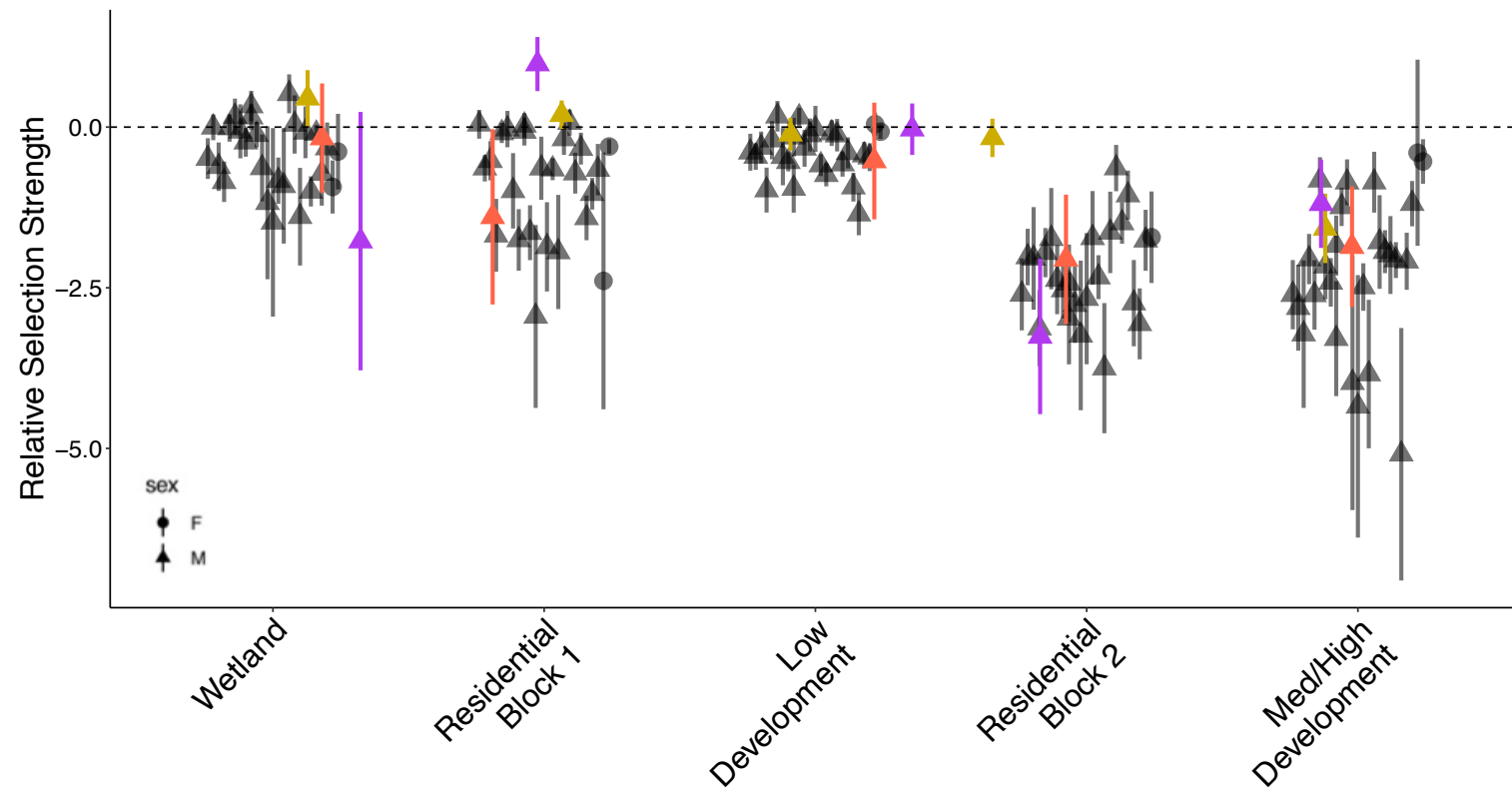
Landcover Types

- Forest
- Wetland/Herbaceous/Water
- Low Intensity Development
- Residential Block Type 1
- Residential Block Type 2
- Medium and High Intensity Development

0 20 40 60 80 100

% Landcover in home ranges

(b)



Simulated dispersal kernels based on individual movement and relative selection strength

(c)

