



Figure 1: Intraoperative photograph showing a fatty like lobulated mass lateral to spermatic cord and testis

A: Spermatic cord B: Lipoma



Figure 2: Wound with intact nylon suture on day 10 post-operative before removal of sutures.

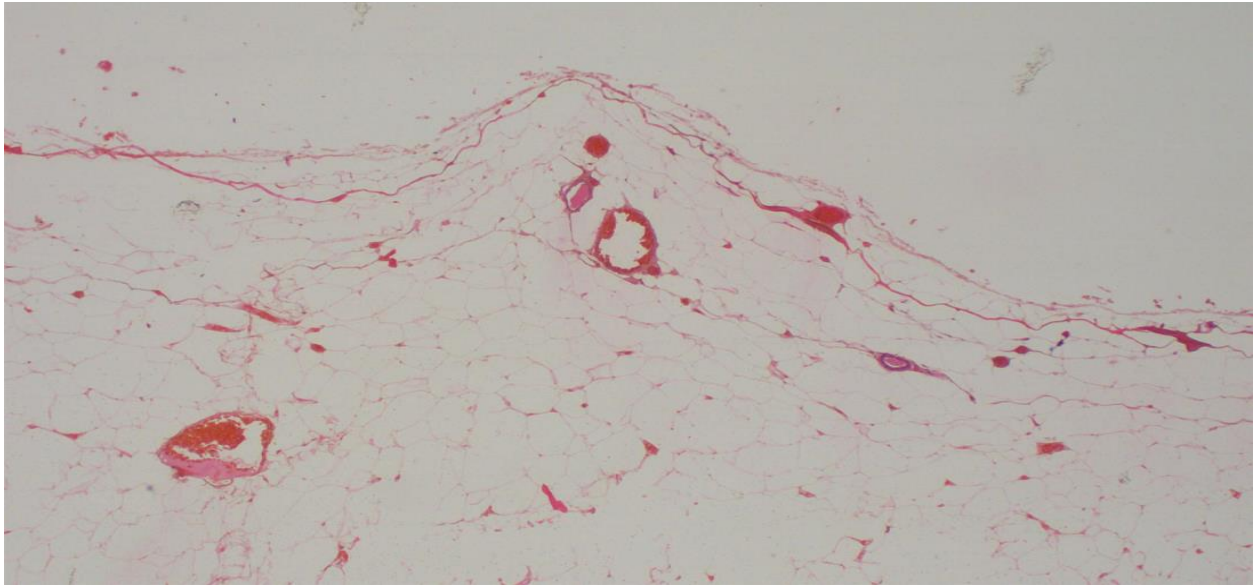


Figure 3: A Hematoxylin and Eosin-stained photomicrograph showing mature adipocytes without atypia admixed with congested blood vessels x 04 magnification.

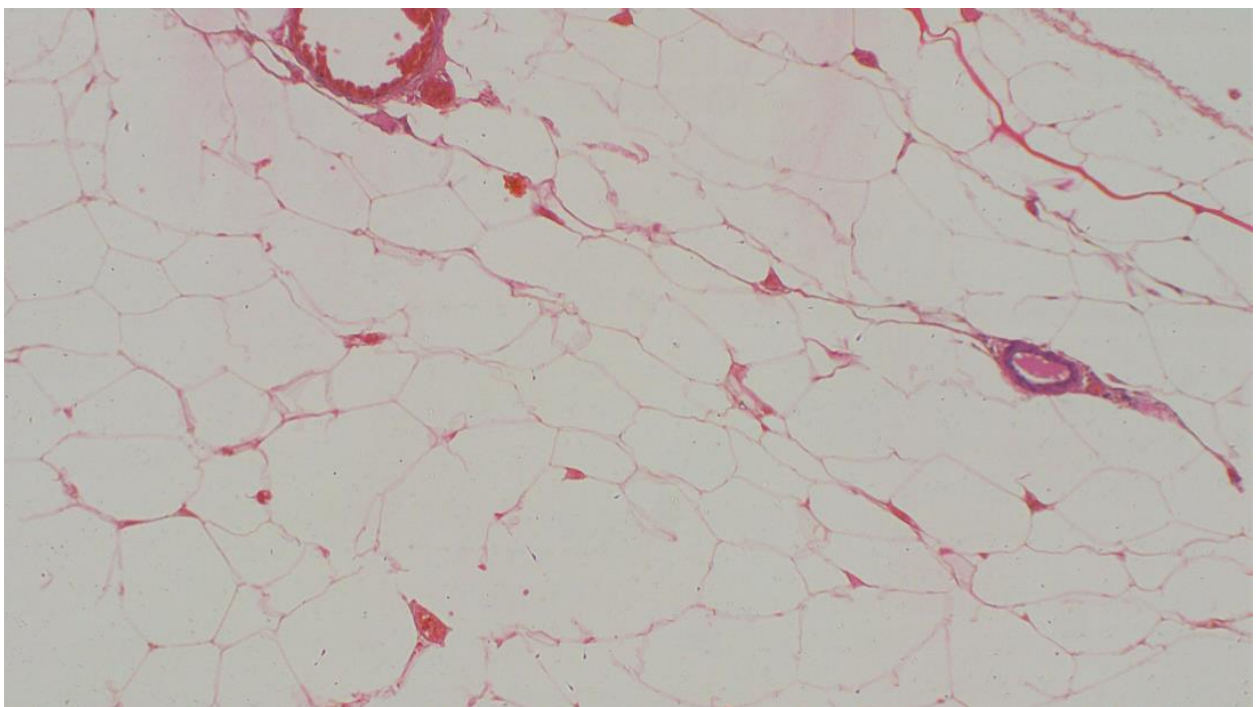


Figure 4: A Hematoxylin and Eosin-stained photomicrograph showing mature adipocytes without atypia separated by thin fibrous stroma and blood vessels x40 magnification.