

Supporting Information for “Evaluating the effects of burn severity and precipitation on post-fire watershed responses using distributed hydrologic models”

Zhi Li¹, Bing Li¹, Peishi Jiang¹, Glenn E. Hammond¹, Pin Shuai², Faria T.

Zahura¹, Ethan T. Coon³, Xingyuan Chen¹

¹Atmospheric, Climate and Earth Sciences Division, Pacific Northwest National Laboratory, Richland, WA, United States

²Utah Water Research Laboratory, Utah State University, Logan, UT, United States

³Climate Change Science Institute & Environmental Sciences Division, Oak Ridge National Laboratory, Oak Ridge, TN, United States

Contents of this file

1. Figures S1 to S3.

Introduction

The Supporting Information includes supplemental figures that help visualize the model inputs (S1), climate regimes of the study sites (S2), and model outputs (S3).

Corresponding author: Xingyuan Chen (xingyuan.chen@pnnl.gov)

November 27, 2023, 5:47pm

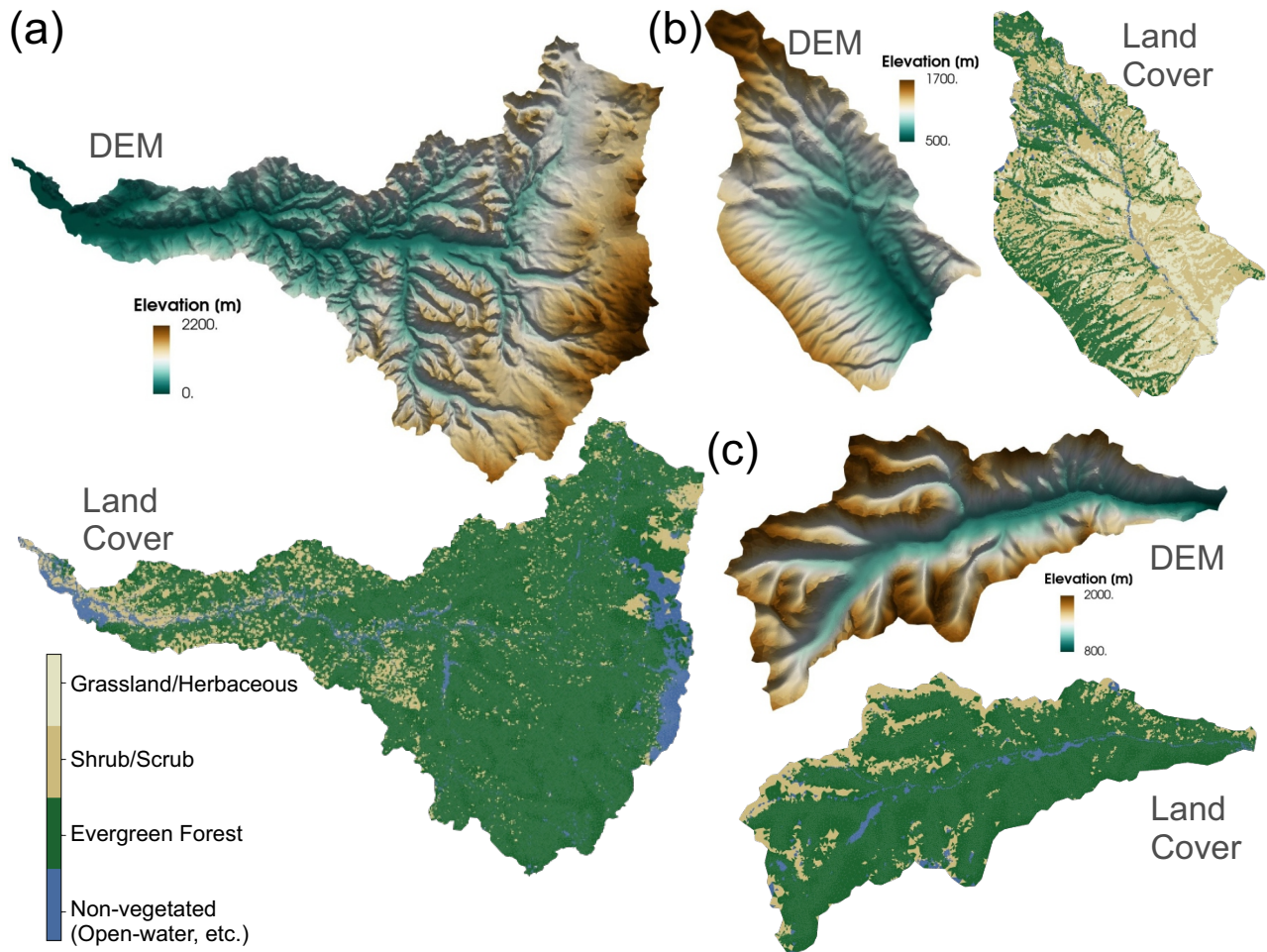


Figure S1. DEM and land cover types in the (a) McKenzie River Watershed, (b) Wenas Creek Watershed, and (c) American River Watershed.

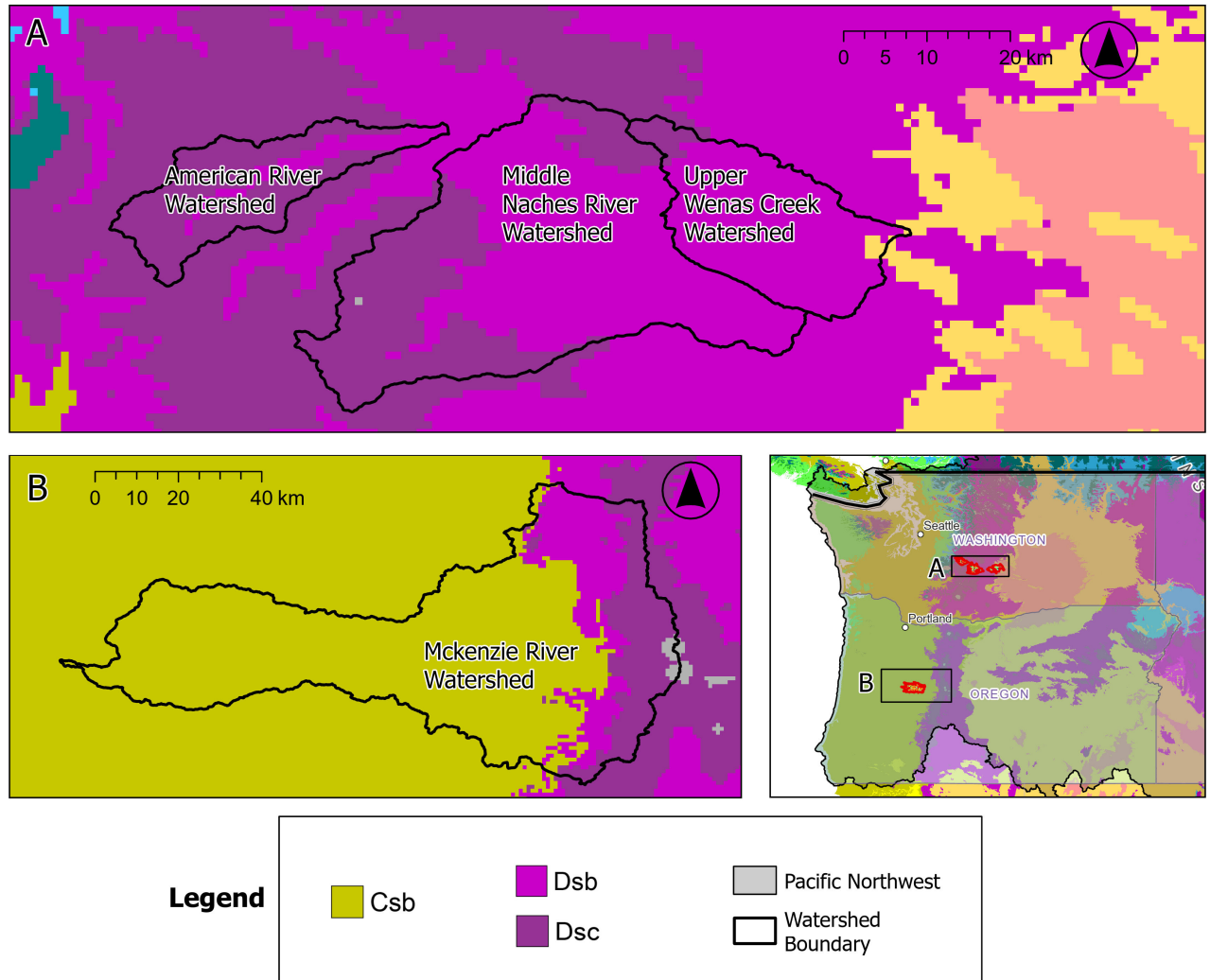


Figure S2. Köppen-Geiger climate classification in the study watersheds (Csb = temperate, dry & warm summer; Dsb = cold, dry & warm summer; Dsc = cold, dry & cold summer).

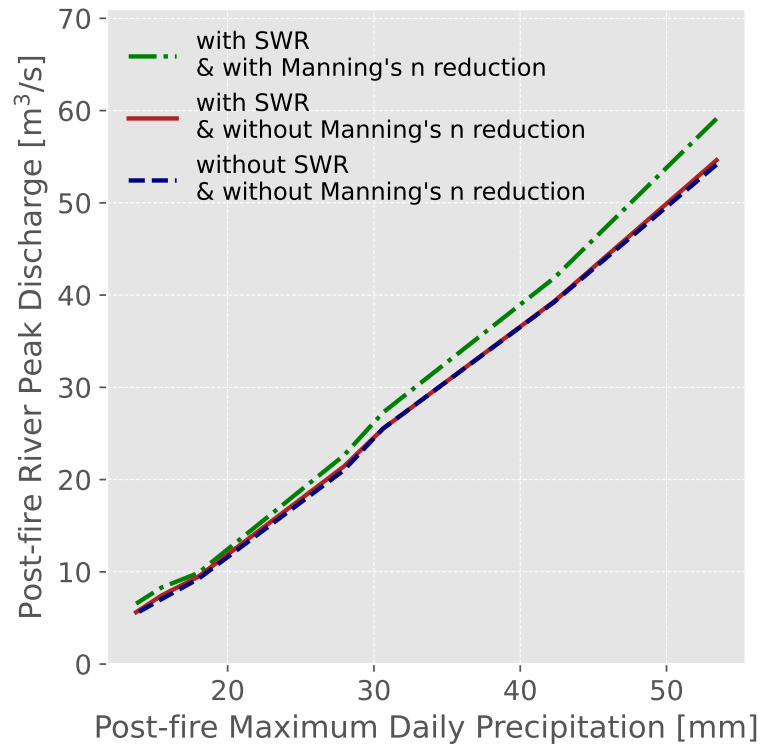


Figure S3. The relationships between the post-fire maximum daily precipitation and the river peak discharge in three scenarios: (1) without the SWR effect and without the Manning's n reduction (base case), (2) without the SWR effect and without the Manning's n reduction, and (3) with the SWR effect and with the Manning's n reduction.