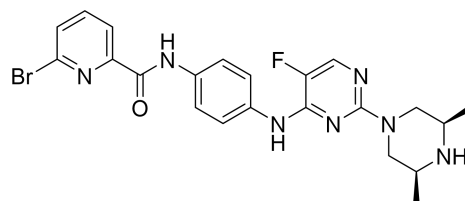


A

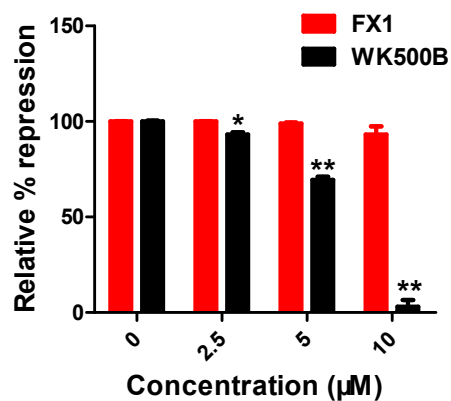
Compound	Relative repression to BCL6 (at 10 μ M)	HTRF IC ₅₀ (μ M)
FX1	3.82%	37.68
WK507B	59.57%	4.85
WK512A	57.46%	6.03
WK500B	95.69%	1.39
WK530B	83.03%	3.44
WK519B	43.80%	5.08
WK521B	48.07%	3.50
WK535E	28.60%	9.64

B

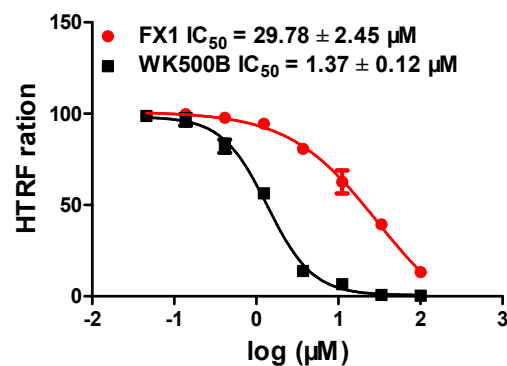


Chemical Formula: C₂₂H₂₃BrFN₇O
Molecular Weight: 500.38
WK500B

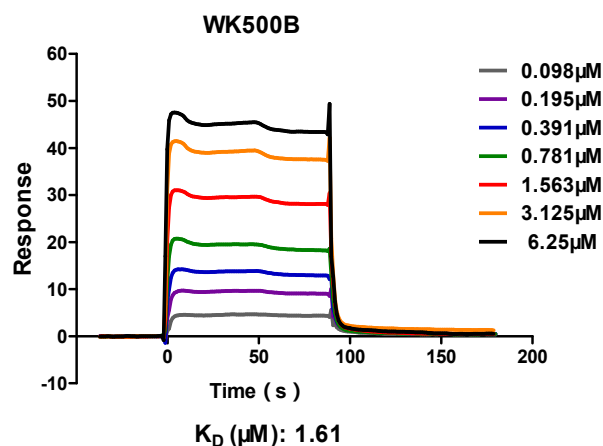
C



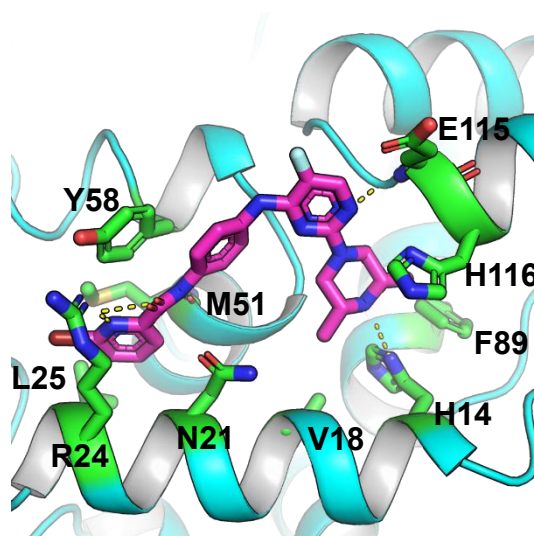
D

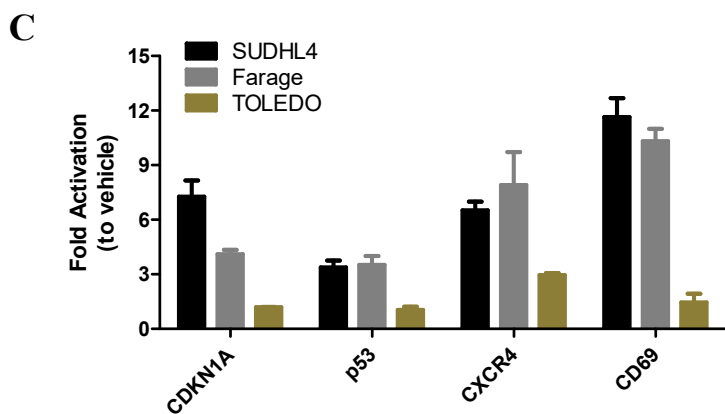
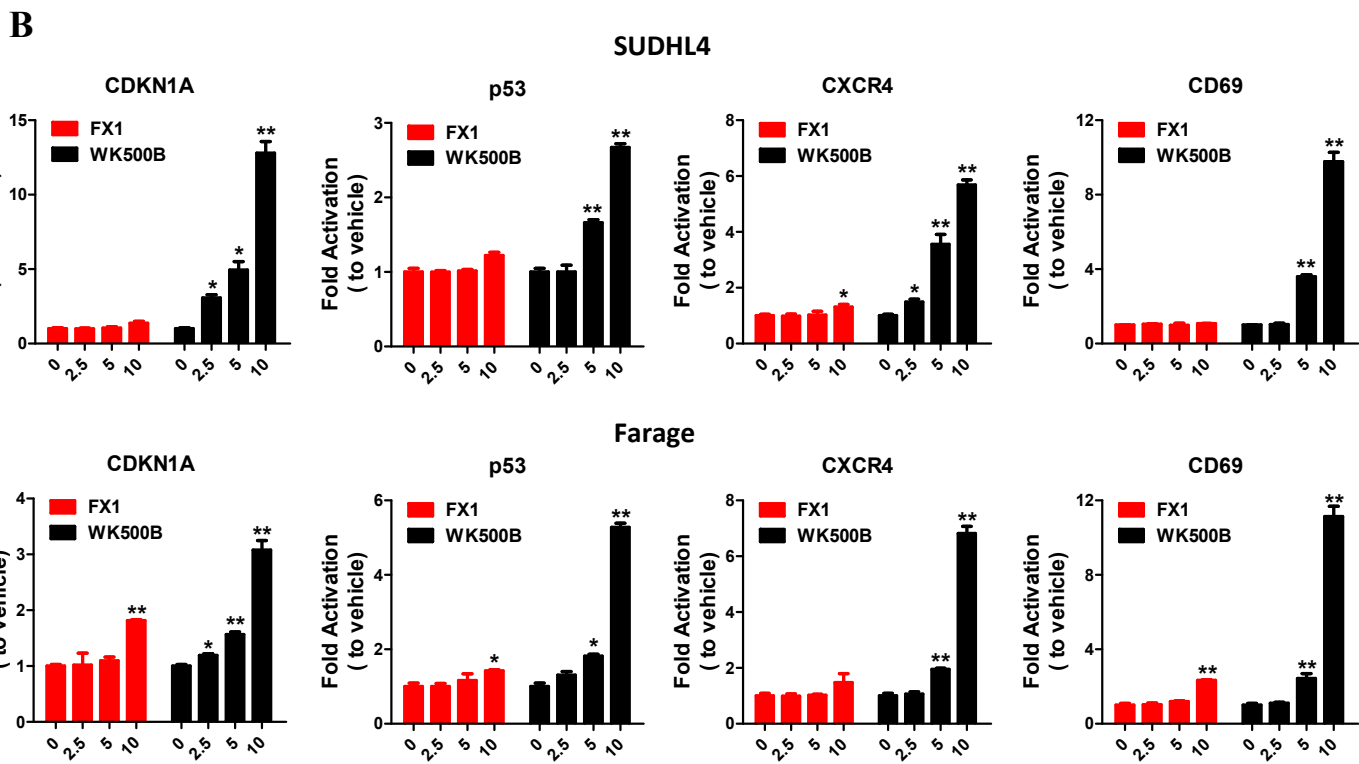
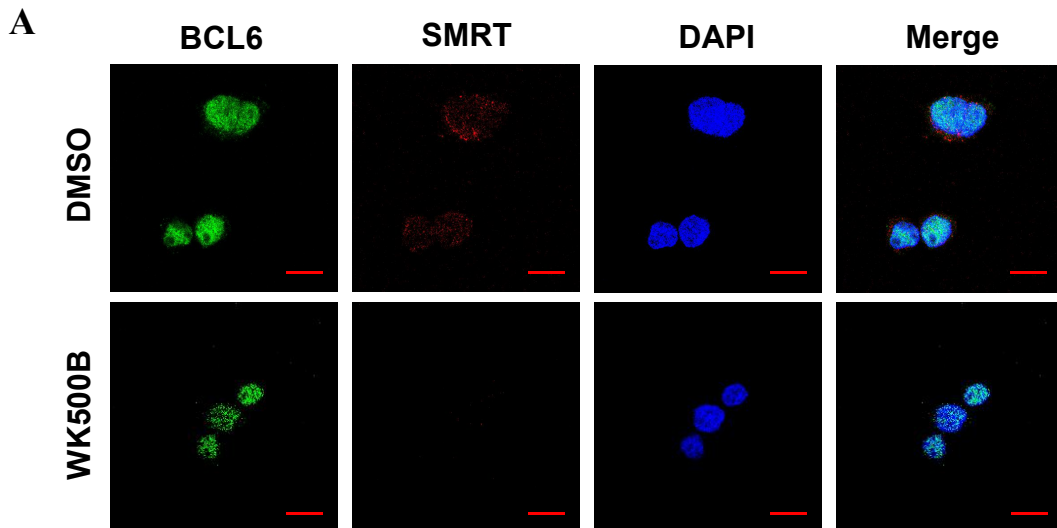


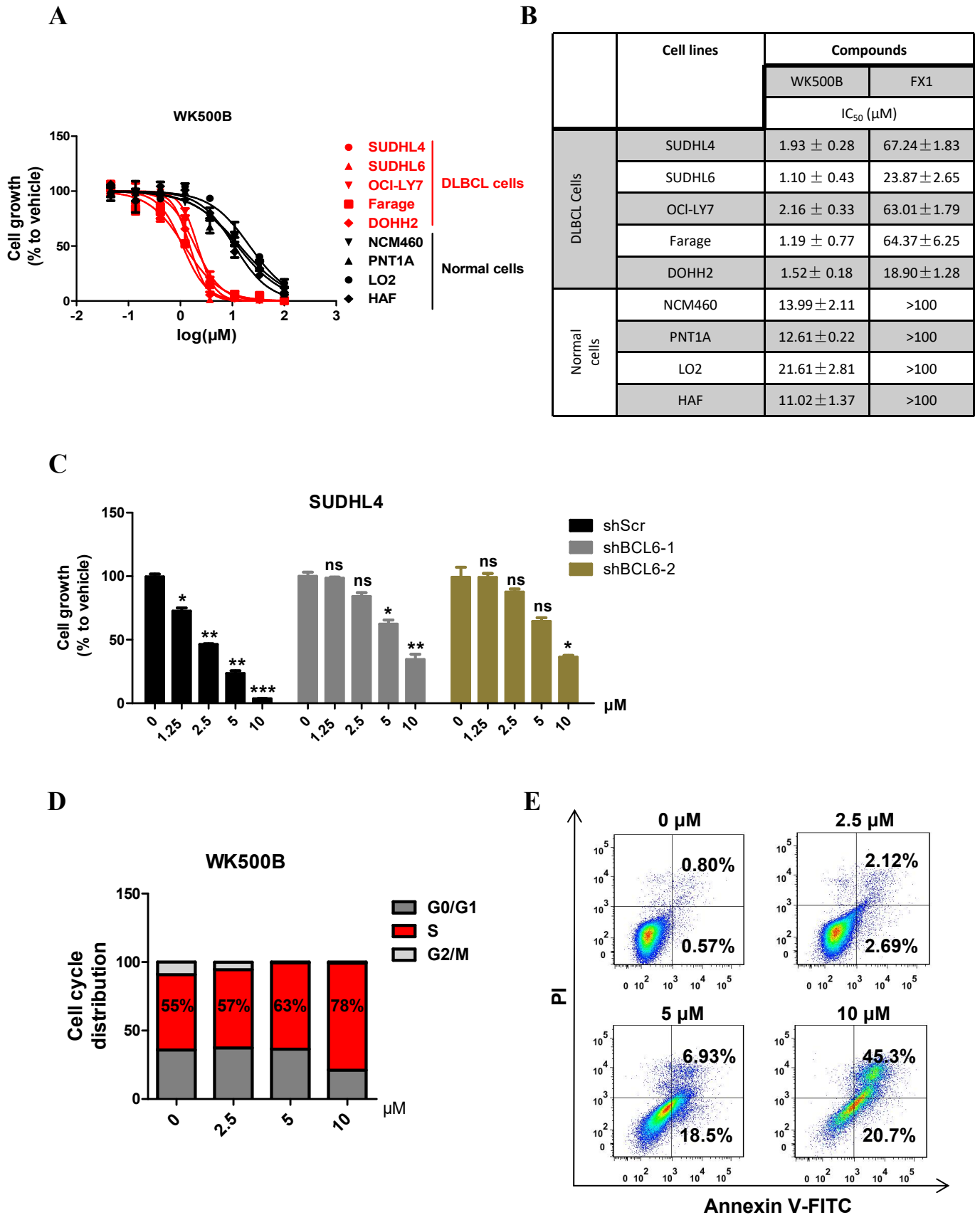
E

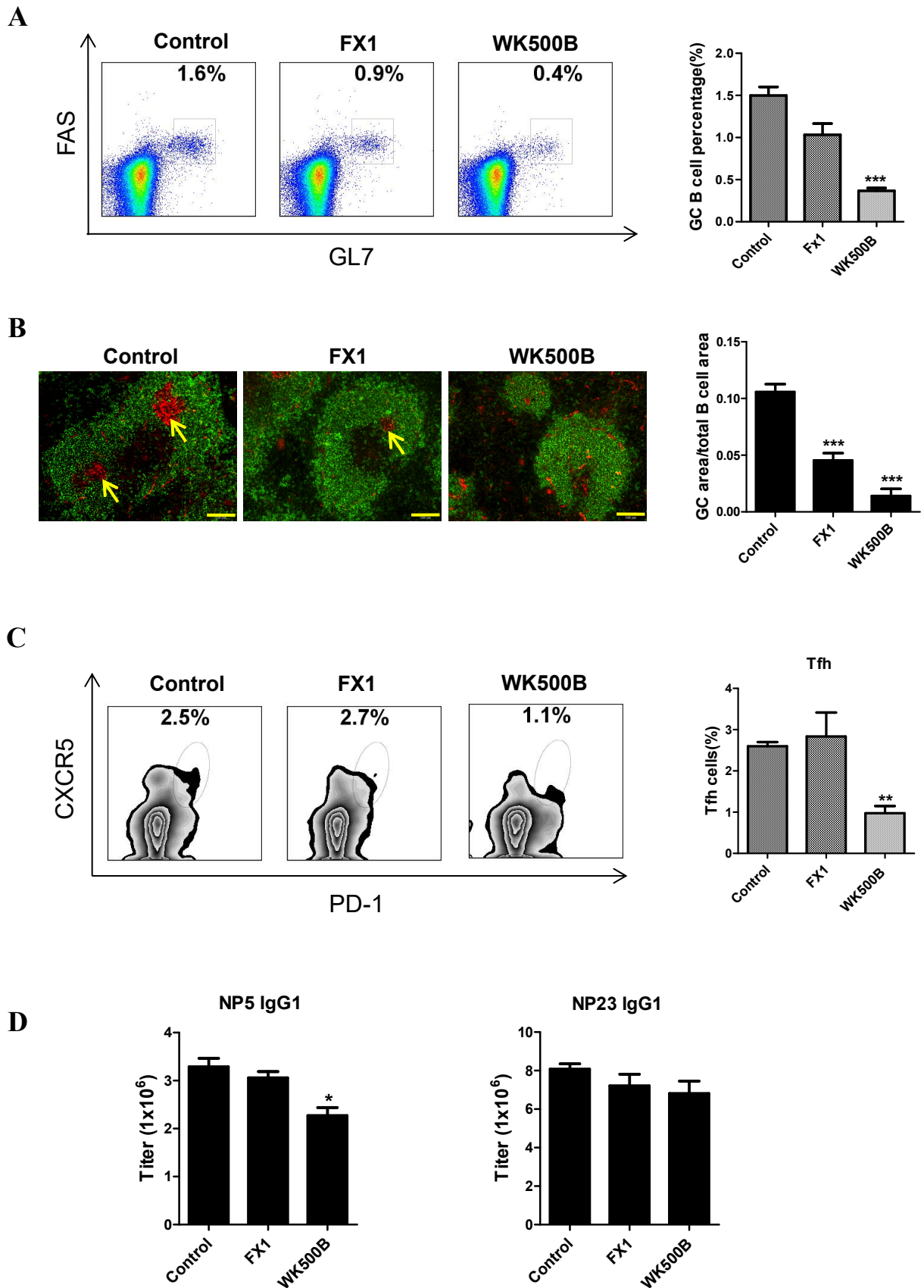


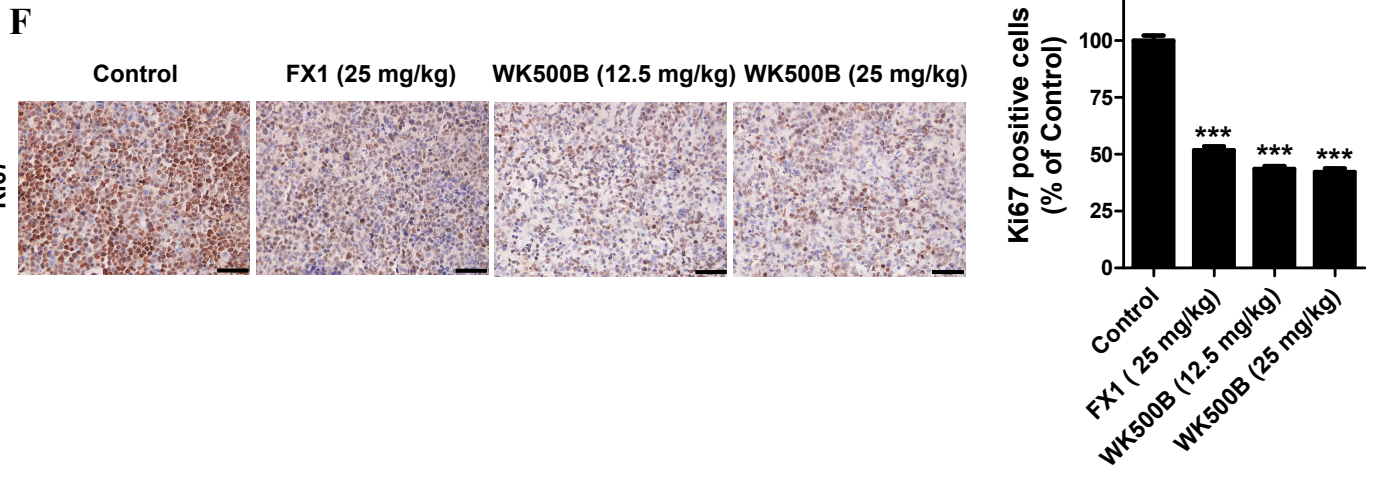
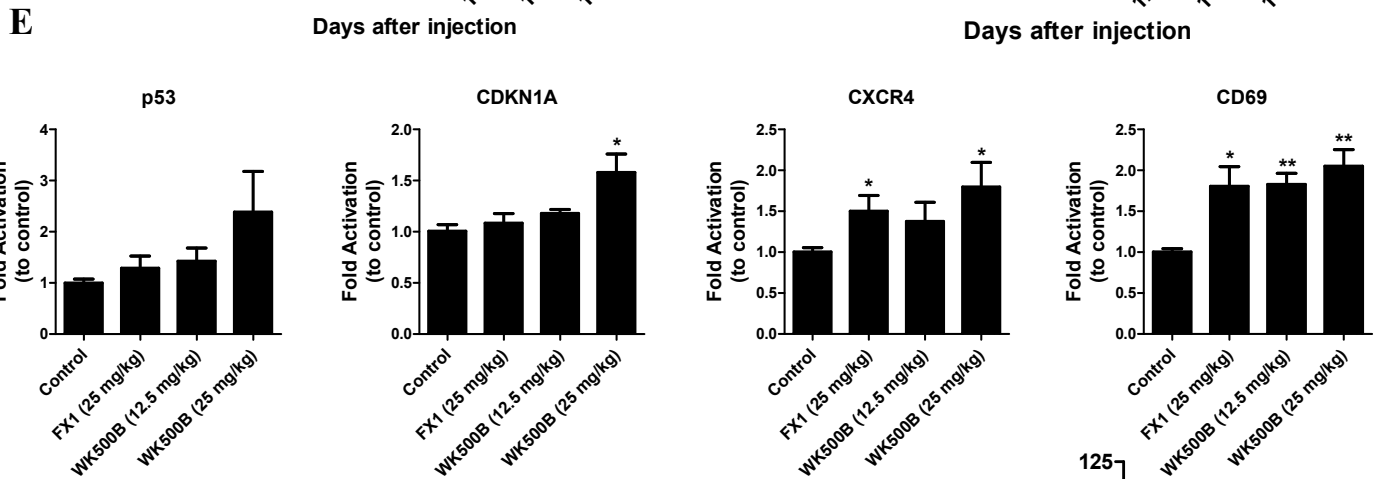
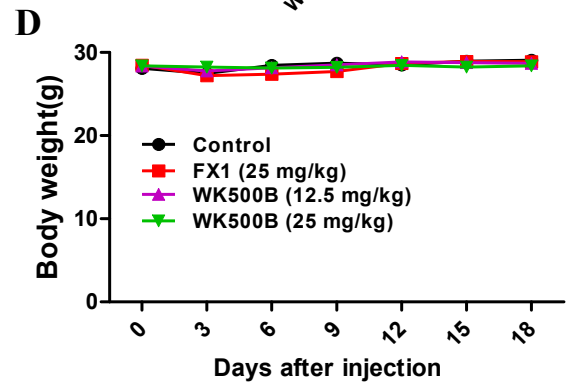
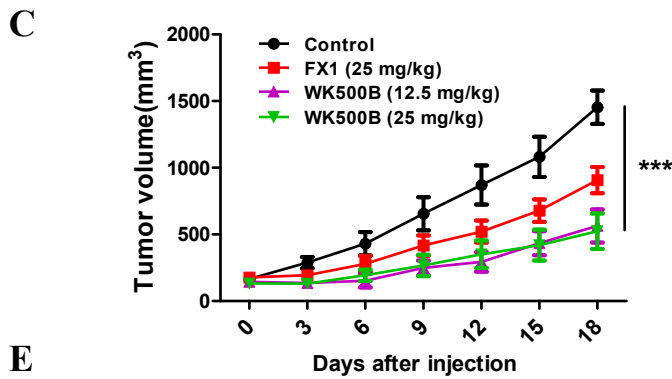
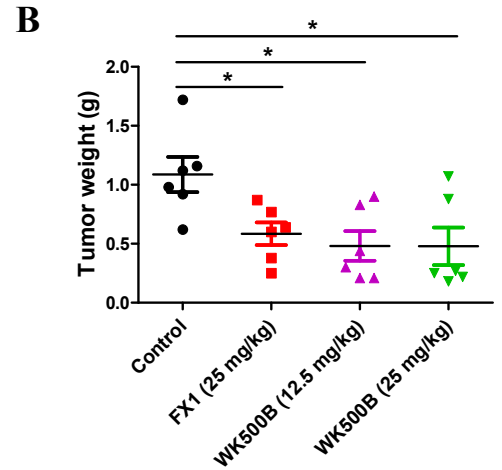
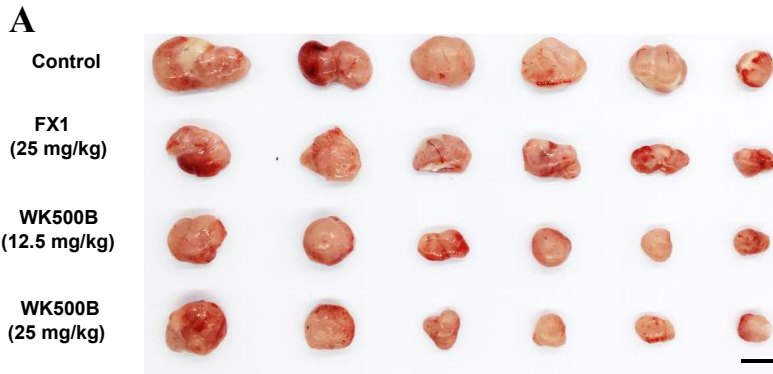
F



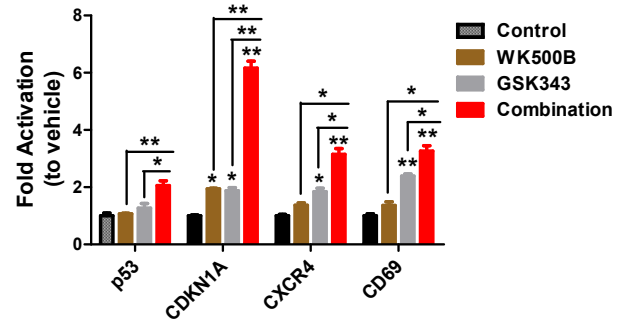
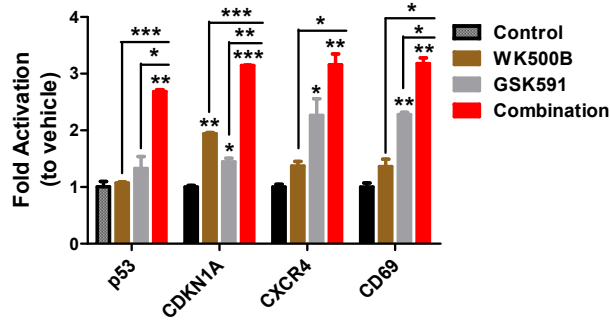




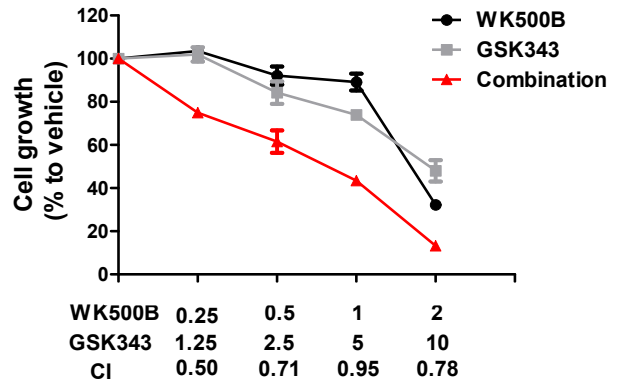
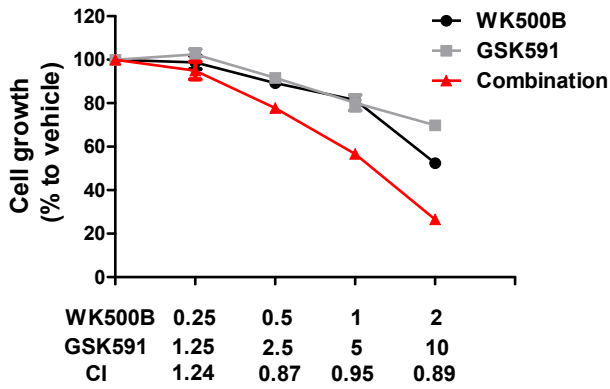




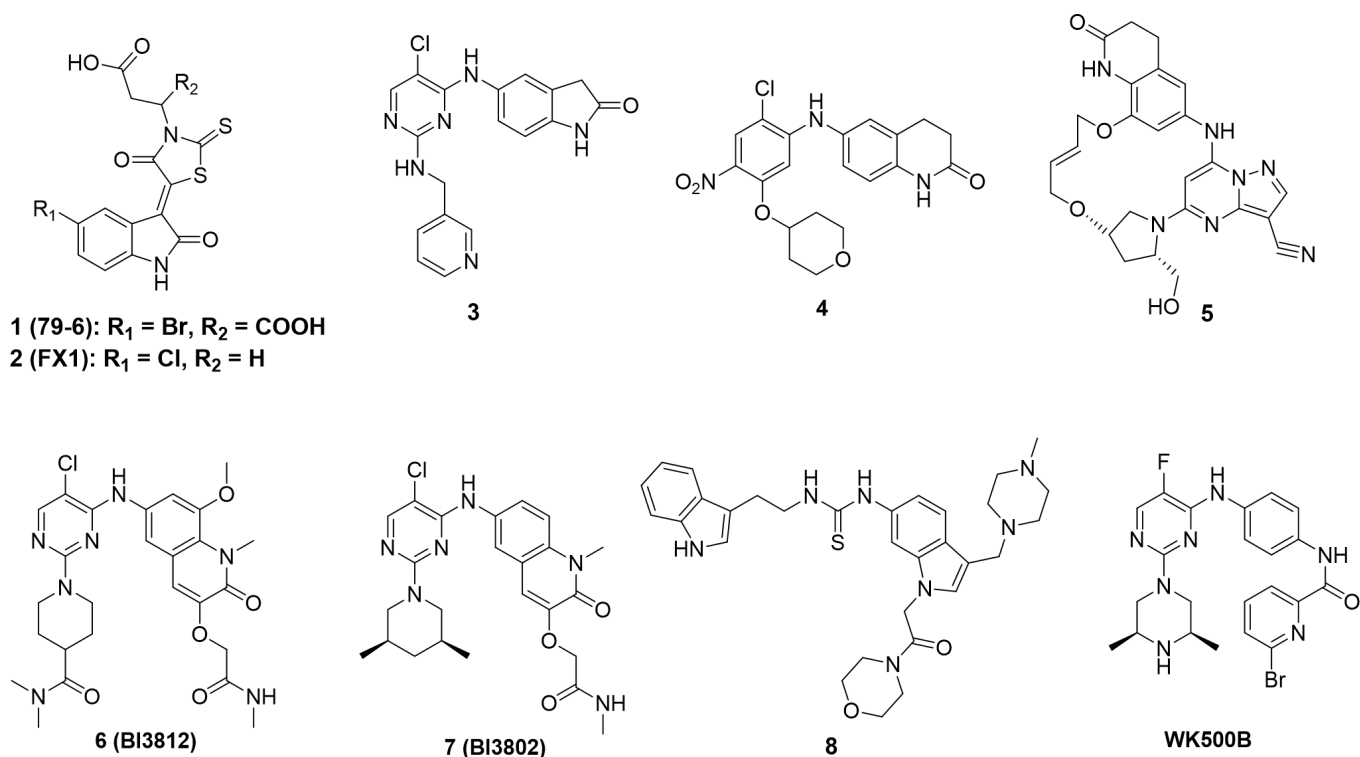
A



B



A



B

BCL6 inhibitor	Lipinski's rule of five			Reactive BCL6 target genes	Inhibition BCL6 biology function in vivo study	orally available for in vivo study
	MW <500	CLogP < 5	tPSA < 140-90			
WK500B	500.38	Y	Y	Y	Y	Y
1(79-6)	Y	Y	Y	Y	Y	N
2(FX1)	Y	Y	86.71	Y	Y	N
3	Y	Y	Y	Y	N	N
4	Y	Y	Y	N	N	N
5	Y	Y	Y	N	N	N
6(BI3812)	N	Y	Y	N	N	N
7(BI3802)	Y	Y	Y	Y	N	N
8	573.76	Y	75.35	N	N	N